

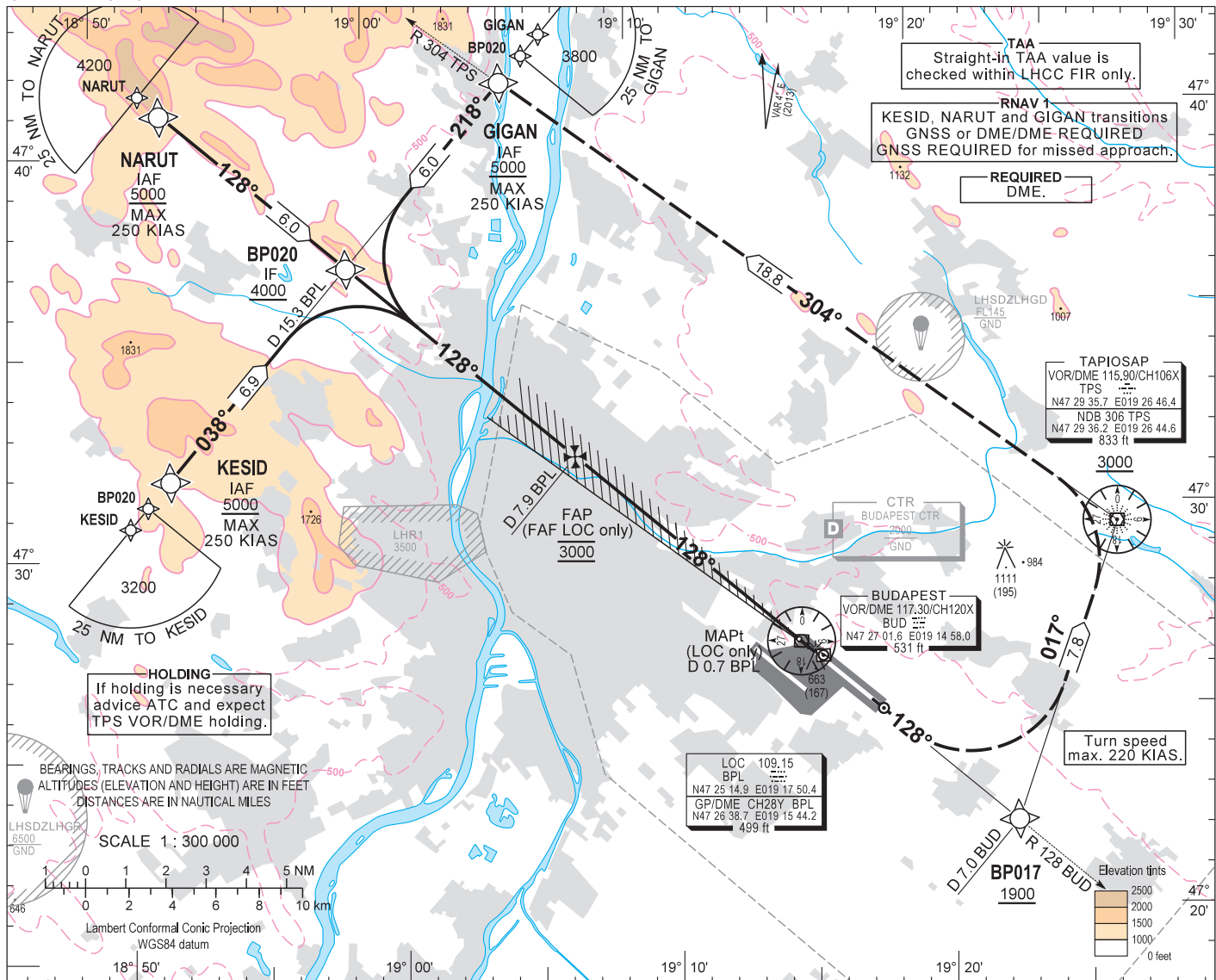
AIP HUNGARY

INSTRUMENT APPROACH CHART - ICAO

AERODROME ELEV 496  
HEIGHTS RELATED TO THR RWY 13L - ELEV 496

BUDAPEST APPROACH 129.700 ATIS 132.380 (117.300)  
122.975 BUDAPEST TOWER 118.100  
119.500 BUDAPEST GROUND 121.900

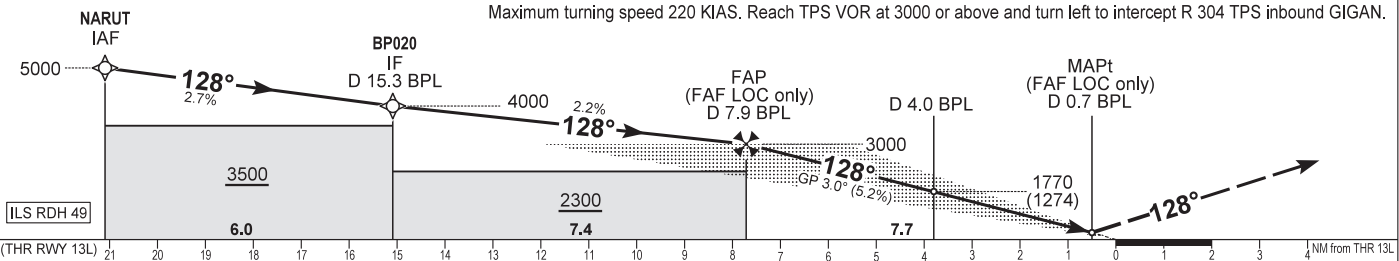
BUDAPEST/LISZT FERENC  
ILS or LOC RWY 13L  
(ACFT CAT A, B, C, D)



TRANSITION ALTITUDE  
10000

Climb 4000 and continue on RWY track 128°. Cross BP017 (fly-by) waypoint at 1900 or above and turn left to track 017° inbound TPS. Maximum turning speed 220 KIAS. From TPS proceed to GIGAN on track 304°.

MISSED APPROACH (RNAV)  
Climb 4000 and continue on R 128 BUD outbound. Cross D 7.0 BUD at 1900 or above and turn left direct to TPS VOR. Maximum turning speed 220 KIAS. Reach TPS VOR at 3000 or above and turn left to intercept R 304 TPS inbound GIGAN.



CAT OF ACFT		A	B	C	D	DME BPL	NM	7.0	6.0	5.0	4.0	3.0	2.0	
OCA (H) STRAIGHT-IN	CAT I	2.5% macg	955 (459)	964 (468)	974 (478)	984 (488)	DIST THR / RWY 13L	NM	6.8	5.8	4.8	3.8	2.8	1.8
		4.0% macg	663 (167)	675 (179)	683 (187)	694 (198)	ALTITUDE	ft	2730	2410	2090	1770	1460	1140
	CAT II	2.5% macg	866 (370)	882 (386)	896 (400)	909 (413)	Timing not authorised for defining the MAPt.							
		4.0% macg	575 (79)	592 (96)	604 (108)	618 (122)	GS	kt	80	100	120	140	160	180
	LOC	2.5% macg	950 (454)	980 (484)	1000 (504)	1020 (524)	FAP/FAF - THR 13L (7.7 NM)	min:sec	5:47	4:38	3:52	3:19	2:54	2:35
		3.8% macg		860 (364)		880 (384)	Rate of descent (324.8 ft/NM)	ft/min	430	540	640	750	860	970
CIRCLING		980	1190	1310	1510									

**AD 2 LHBP INSTRUMENT APPROACH CHART ILS OR LOC RWY 13L**

SEQ	P&T	Name	Latitude	Longitude	FlyOver	Bearing/ (Len Dur)	Turn Direction	Altitude (FT)	IAS (KT)	VPA/RDH (FT)	RNP (NM)
010	IF	GIGAN(IAF)	N47 41 17.3	E019 04 58.0	N	...	...	+5000	-250	...	...
020	TF	BP020(IF)	N47 36 51.5	E018 58 59.1	N	222 T/6.00 NM	...	+4000	...	-1.6°	...
010	IF	KESID(IAF)	N47 31 47.2	E018 52 10.0	N	...	...	+5000	-250	...	...
020	TF	BP020(IF)	N47 36 51.5	E018 58 59.1	N	042 T/6.86 NM	...	+4000	...	-1.4°	...
010	IF	NARUT(IAF)	N47 40 52.8	E018 52 24.1	N	...	...	+5000	-250	...	...
020	TF	BP020(IF)	N47 36 51.5	E018 58 59.1	N	132 T/6.00 NM	...	+4000	...	-1.6°	...
010	IF	BP020(IF)	N47 36 51.5	E018 58 59.1	N	...	...	+4000	...	...	...
020	CF	BP019(FAP)	N47 31 54.7	E019 07 02.8	N	132 T/7.37 NM	...	@3000	...	-1.3°	...
030	CF	RW13L(LTP/FTP)	N47 26 43.5	E019 15 27.2	Y	132 T/7.71 NM	...	+545	...	-3.0°/15	...
010	IF	MAPt (LOC only)	N47 27 04.7	E019 14 53.0	Y	...	...	+860	...	...	...
020	TF	BP017	N47 22 18.6	E019 22 34.5	N	132 T/6.55 NM	...	+1900	...	2.3°	...
030	TF	TPS	N47 29 35.7	E019 26 46.4	N	021 T/7.83 NM	L	+3000	-220	1.0°	...
040	TF	GIGAN	N47 41 17.3	E019 04 58.0	Y	308 T/18.83 NM	L	@4000	...	0.5°	...

Final approach descent: 3.0°.  
LOC only descent: 2.99°.