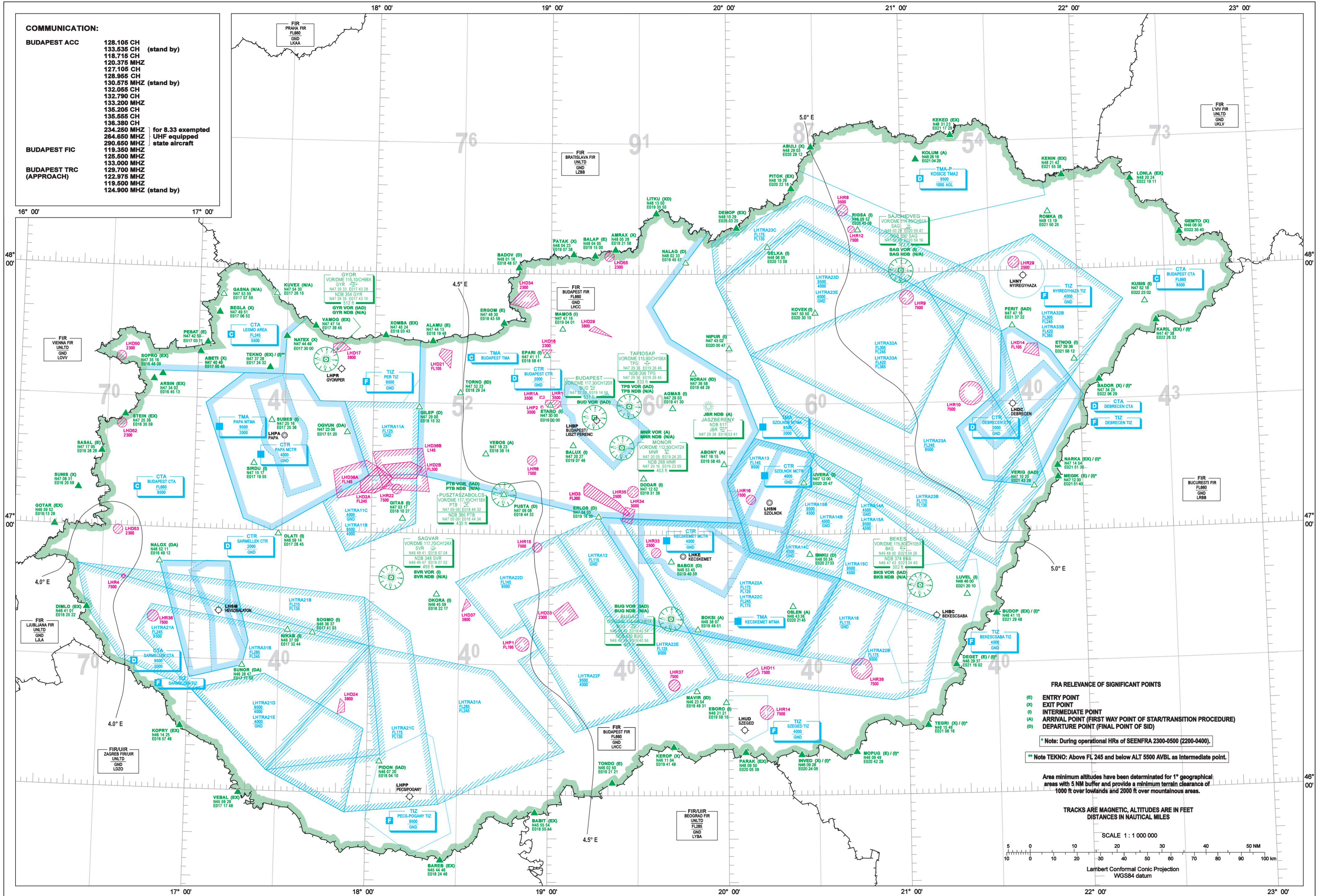


COMMUNICATION:

BUDAPEST ACC	128.105 CH 133.535 CH (stand by) 118.715 CH 120.375 MHz 127.105 CH 128.955 CH 130.575 MHz (stand by) 132.065 CH 132.790 CH 133.200 MHz 135.205 CH 135.555 CH 136.380 CH 234.250 MHz 264.650 MHz	for 8.33 exempted UHF equipped state aircraft
BUDAPEST FIC	290.650 MHz 119.350 MHz 125.500 MHz 133.000 MHz 129.700 MHz 122.975 MHz 119.500 MHz (stand by)	
BUDAPEST TRC (APPROACH)		



FRA RELEVANCE OF SIGNIFICANT POINTS

- (E) ENTRY POINT
- (X) EXIT POINT
- (I) INTERMEDIATE POINT
- (A) ARRIVAL POINT (FIRST WAY POINT OF STAR/TRANSITION PROCEDURE)
- (D) DEPARTURE POINT (FINAL POINT OF SID)

* Note: During operational HRs of SEENFRA 2300-0500 (2200-0400).

** Note TEKNO: Above FL 245 and below ALT 5500 AVBL as intermediate point.

Area minimum altitudes have been determined for 1° geographical areas with 5 NM buffer and provide a minimum terrain clearance of 1000 ft over lowlands and 2000 ft over mountainous areas.

TRACKS ARE MAGNETIC, ALTITUDES ARE IN FEET
DISTANCES IN NAUTICAL MILES

SCALE 1 : 1 000 000

Lambert Conformal Conic Projection
WGS84 datum

THIS PAGE IS INTENTIONALLY LEFT BLANK