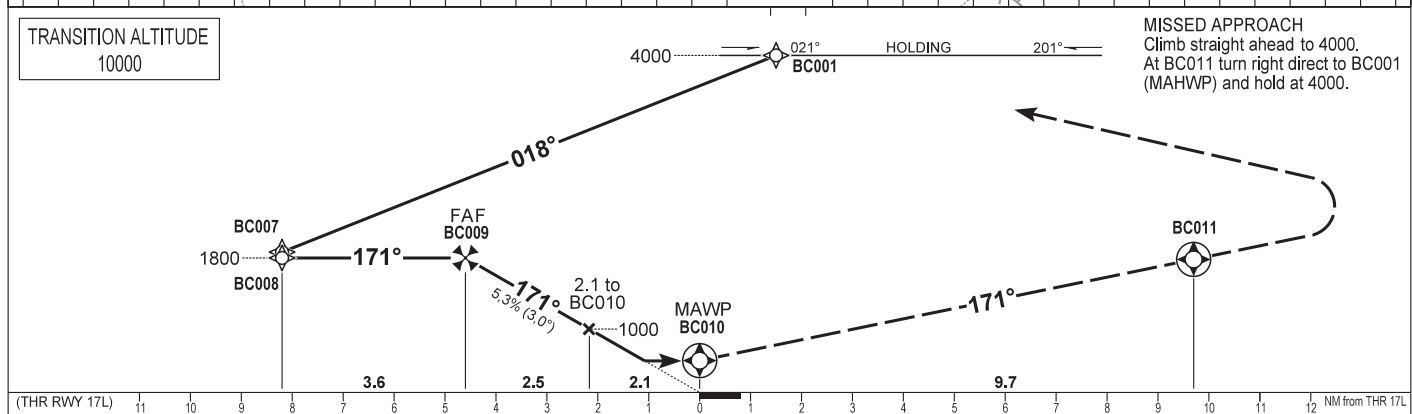
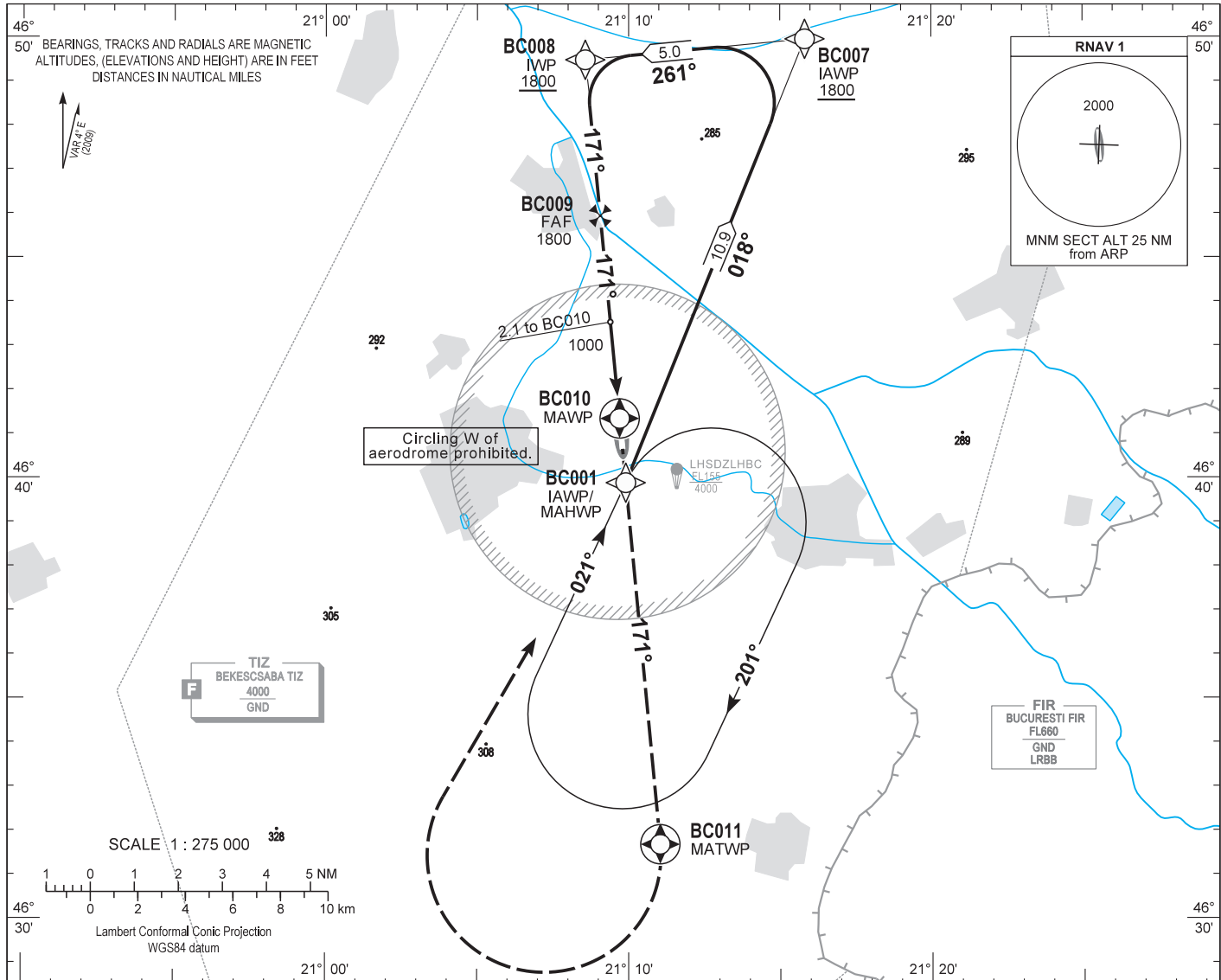


AIP HUNGARY

INSTRUMENT APPROACH CHART - ICAO  
AERODROME ELEV 286  
HEIGHTS RELATED TO THR RWY 17L - ELEV 283

BÉKÉSCSABA INFO 123.250  
BUDAPEST INFORMATION (EAST) 133.000

BÉKÉSCSABA  
RNAV<sup>(GNSS)</sup> RWY 17L  
(ACFT CAT A, B, C, D)



|                                     |           |      |      |      |      |   |   |   |   |   |   |   |                    |   |   |   |              |         |      |      |      |      |      |    |                 |     |     |
|-------------------------------------|-----------|------|------|------|------|---|---|---|---|---|---|---|--------------------|---|---|---|--------------|---------|------|------|------|------|------|----|-----------------|-----|-----|
| (THR RWY 17L)                       | 11        | 10   | 9    | 8    | 7    | 6 | 5 | 4 | 3 | 2 | 1 | 0 | 1                  | 2 | 3 | 4 | 5            | 6       | 7    | 8    | 9    | 10   | 11   | 12 | NM from THR 17L |     |     |
| OCA (OCH)                           | A         |      |      |      | B    |   |   |   | C |   |   |   | D                  |   |   |   | GROUND SPEED |         |      |      |      | kt   | 60   | 90 | 120             | 150 | 180 |
| STRAIGHT-IN APPROACH                | 640 (360) |      |      |      |      |   |   |   |   |   |   |   | FAF - MAPt 4.62 NM |   |   |   |              | MIN:sec | 4:38 | 3:05 | 2:19 | 1:51 | 1:33 |    |                 |     |     |
| CIRCLING APPROACH<br>W of aerodrome | ft AMSL   | 690  | 790  | 890  | 990  |   |   |   |   |   |   |   |                    |   |   |   |              |         |      |      |      |      |      |    |                 |     |     |
|                                     | VIS. m    | 1900 | 2800 | 3700 | 4600 |   |   |   |   |   |   |   |                    |   |   |   |              |         |      |      |      |      |      |    |                 |     |     |

Not authorised.

## AD 2 LHBC INSTRUMENT APPROACH CHART RNAV<sub>(GNSS)</sub> RWY 17L

Only aircraft, equipment and aircrew **approved by the State of the Operator** to carry out GNSS approaches, may use the procedure.

**Arrivals:**

Arrivals on 258° clockwise to 138° may enter the initial approach directly at 4000, according to the advice of BÉKÉSCSABA INFO.  
Other arrivals must enter the holding.

**Holding procedure:**

Holding fix: BC001 (IAWP/MAHWP).  
Right hand holding pattern.  
Inbound track: 021°  
Outbound track: 201°  
Rate of turn: 3°/sec. or 25° bank angle  
(whichever requires lesser bank)  
Outbound distance: 4.0 km  
Minimum holding altitude: 4000

**Final approach descent: 3.00°**

### WAYPOINT COORDINATES AD 2-LHBC-RNAV<sub>(GNSS)</sub> 17L

| WAYPOINT | LATITUDE    | LONGITUDE    | REMARK |
|----------|-------------|--------------|--------|
| BC001    | N46 39 53.6 | E021 09 54.3 | IAWP   |
| BC007    | N46 49 57.8 | E021 15 49.1 | IAWP   |
| BC008    | N46 49 29.4 | E021 08 34.1 | IWP    |
| BC009    | N46 45 57.1 | E021 09 03.7 | FAF    |
| BC010    | N46 41 21.1 | E021 09 42.2 | MAWP   |
| BC011    | N46 31 41.3 | E021 11 02.5 | MATWP  |
| BC001    | N46 39 53.6 | E021 09 54.3 | MAHWP  |