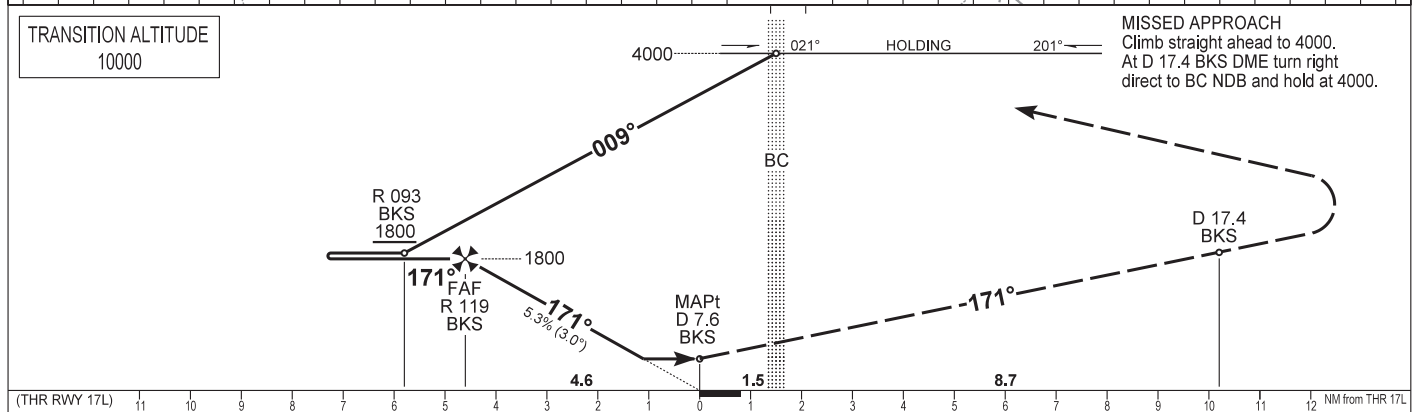
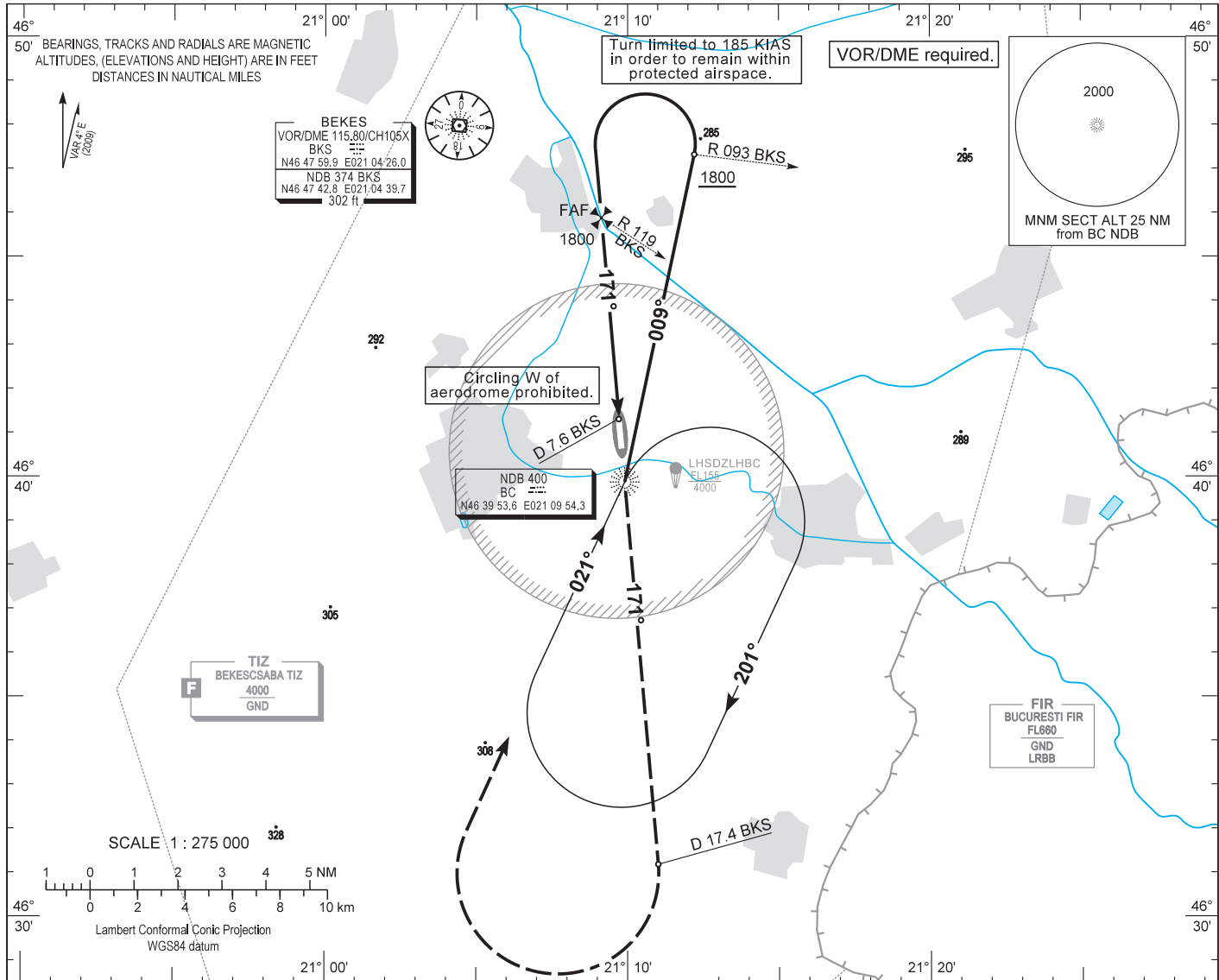


AIP HUNGARY

INSTRUMENT APPROACH CHART - ICAO
AERODROME ELEV 286
HEIGHTS RELATED TO THR RWY 17L - ELEV 283

BÉKÉSCSABA INFO 123.250
BUDAPEST INFORMATION (EAST) 133.000

BÉKÉSCSABA
NDB RWY 17L
(ACFT CAT A, B, C, D)



OCA (OCH)	A	B	C	D	GROUND SPEED	kt	60	90	120	150	180
STRAIGHT-IN APPROACH	640 (360)				FAF - MAPt 4.62 NM	MIN:sec	4:38	3:05	2:19	1:51	1:33
CIRCLING APPROACH W of aerodrome	ft AMSL	690	790	890							
	VIS. m	1900	2800	3700							

Not authorised.

AD 2 LHBC INSTRUMENT APPROACH CHART NDB RWY 17L

Approach from BC NDB:

Initial altitude: 4000.

Fly outbound on 009° and descend to 1800 or above.

When crossing R 093 BKS VOR turn left (185 KIAS max.) to 171° inbound BC NDB.

After crossing R 119 BKS VOR leave 1800 and descend to 640.

Holding procedure:

Holding fix: BC NDB.

Right hand holding pattern.

Inbound track: 021°

Outbound track: 201°

Rate of turn: 3°/sec. or 25° bank angle

(whichever requires lesser bank)

Outbound timing: 1 min.

Minimum holding altitude: 4000

Final approach descent: 3.00°