

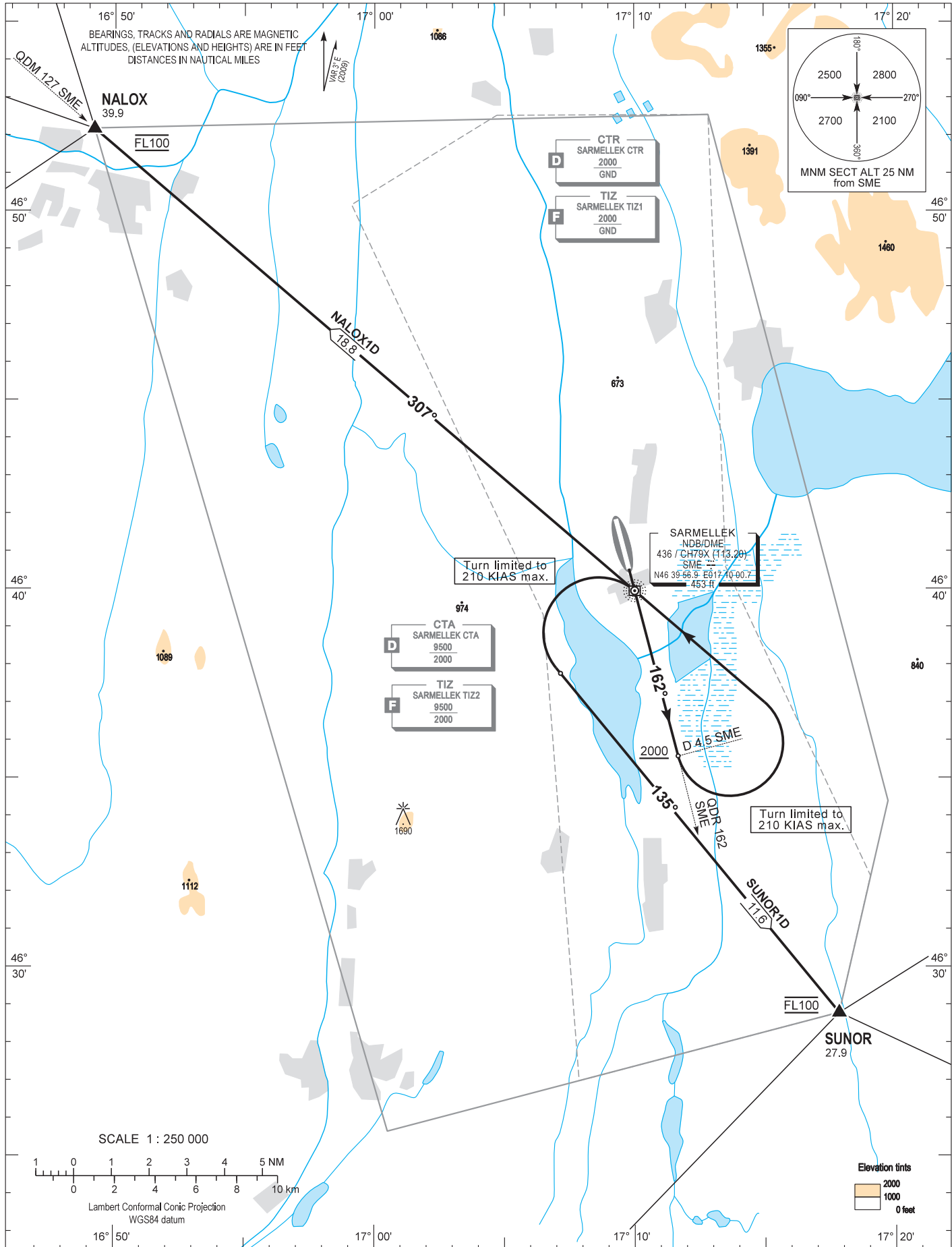
AIP HUNGARY

STANDARD DEPARTURE CHART -  
INSTRUMENT (SID) -  
ICAO

TRANSITION ALTITUDE  
9000

ŠÁRMELLÉK TOWER 134.575  
BALATON INFO 134.575  
BUDAPEST INFO (WEST) 125.500

HÉVÍZ/BALATON  
RWY 16  
NALOX1D SUNOR1D



**AD 2 LHSM STANDARD DEPARTURE CHART INSTRUMENT RWY 16**

NAME	PROCEDURE
<b>NALOX1D</b> (32.1)	After departure continue RWY HDG. Climb to FL100. Cross D 4.5 SME DME at 2000 or above then turn left and proceed direct to SME NDB. (Turn limited to 210 KIAS max.) After crossing SME NDB fly on QDR 307 SME NDB proceeding to NALOX. Cross NALOX at FL100.
<b>SUNOR1D</b> (29.5)	After departure continue RWY HDG. Climb to FL100. Cross D 4.5 SME DME at 2000 or above then turn left and proceed direct to SME DME. (Turn limited to 210 KIAS MAX.) After crossing SME NDB turn left to track 135° proceeding to SUNOR. Cross SUNOR at FL100.