

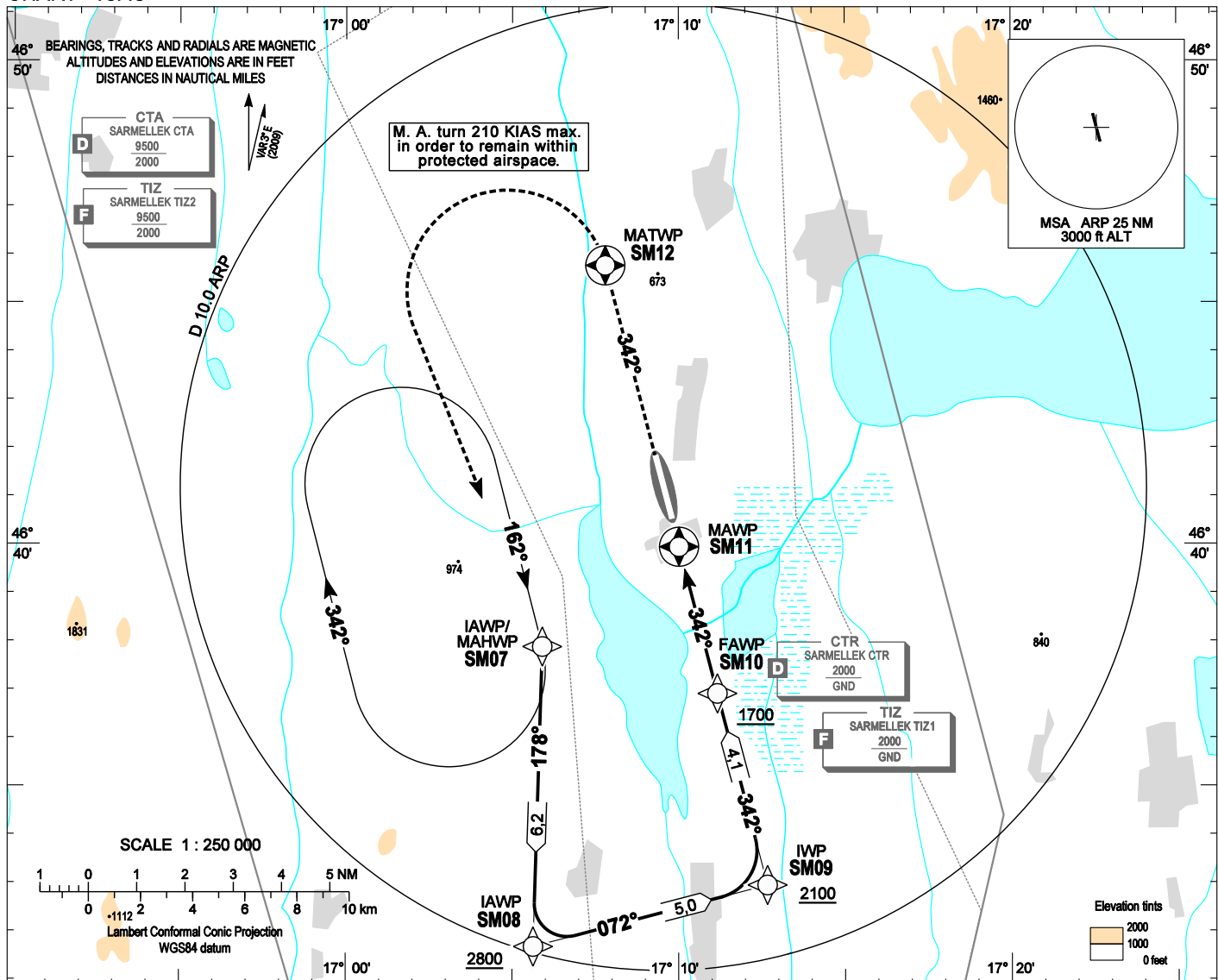
AIP HUNGARY

INSTRUMENT APPROACH CHART - ICAO

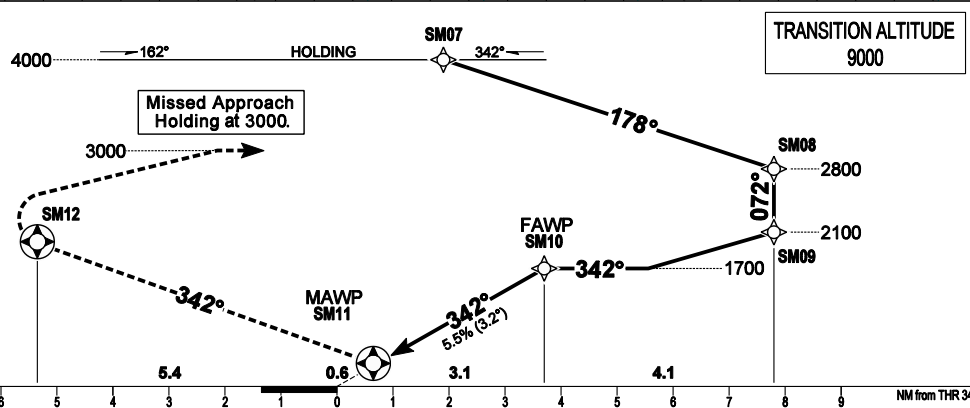
AERODROME ELEV 408
HEIGHTS RELATED TO THR RWY 34 - ELEV 399

SÁRMELLEK TOWER 134.575
BALATON INFO 134.575
BUDAPEST INFO (WEST) 125.500

HÉVÍZ/BALATON
RNAV (GNSS) RWY 34
(ACFT CAT A, B, C, D)



MISSED APPROACH
Climb straight ahead.
At SM12 turn left direct to SM07 (MAHP) and hold at 3000.
Missed approach turn limited to 210 KIAS maximum.



(THR RWY 34)	11	10	9	8	7	6	5	4	3	2	1	0	1	2	3	4	5	6	7	8	9	NM from THR 34
OCA (OCH)					A	B	C	D					GROUND SPEED				kt	60	90	120	150	180
STRAIGHT-IN APPROACH					690 (290)								FAWP - MAWP 3.13 NM				MIN:sec	3:08	2:05	1:34	1:15	1:03
CIRCLING APPROACH	ft AMSL	840	920	1410	1410																	
	VIS. m	1900	2800	3700	4600																	

Timing not authorized to define the MAWP.

AD 2 LHSM GPS/FMS RNAV ARRIVAL CHART RWY 34

Only aircraft, equipment and aircrew approved by the State of the Operator to carry out GNSS approaches, may use the procedure.

Arrivals:

Arrivals on 060°-300° may enter the initial approach directly at 4000, according to the advice of BALATON INFO.
Other arrivals must enter the holding.

Holding procedure:

Holding fix: SM07 (IAWP/MAHWP).

Left hand holding pattern.

Inbound track: 162°

Outbound track: 342°

Rate of turn: 3°/sec. or 25° bank angle
(whichever requires lesser bank)

Outbound distance: 4

Minimum holding altitude: 3000

Final approach descent: 3.15°

WAYPOINT COORDINATES AD 2 LHSM GPS/FMS RNAV ARRIVAL CHART RWY 34

WAYPOINT	LATITUDE	LONGITUDE	REMARK
SM07	N46 37 53.0	E017 05 54.2	IAWP
SM08	N46 31 40.7	E017 05 37.8	IAWP
SM09	N46 32 57.0	E017 12 40.0	IWP
SM10	N46 36 54.8	E017 11 09.9	FAWP
SM11	N46 39 56.9	E017 10 00.7	MAWP
SM12	N46 45 46.2	E017 07 47.8	MATWP
SM07	N46 37 53.0	E017 05 54.2	MAHWP