

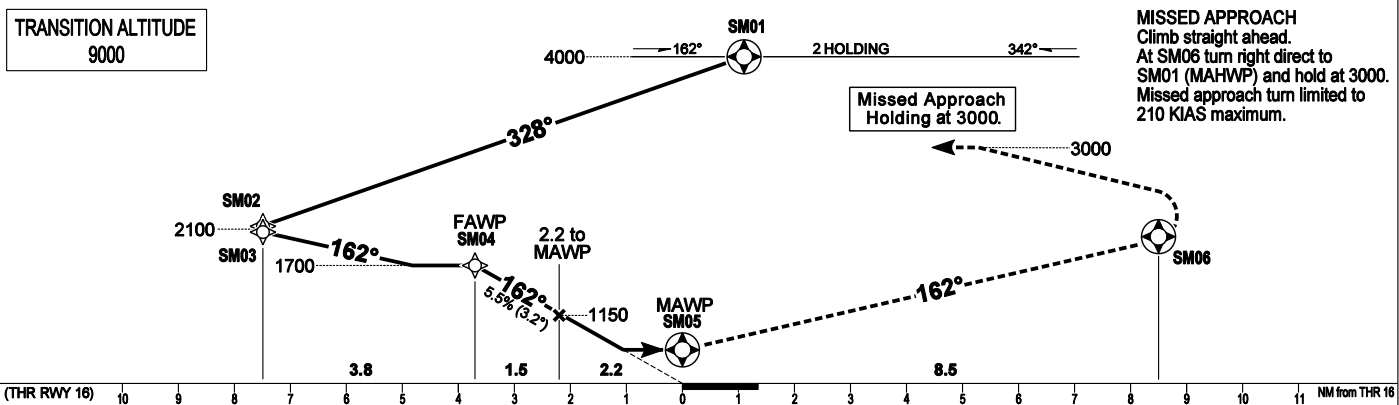
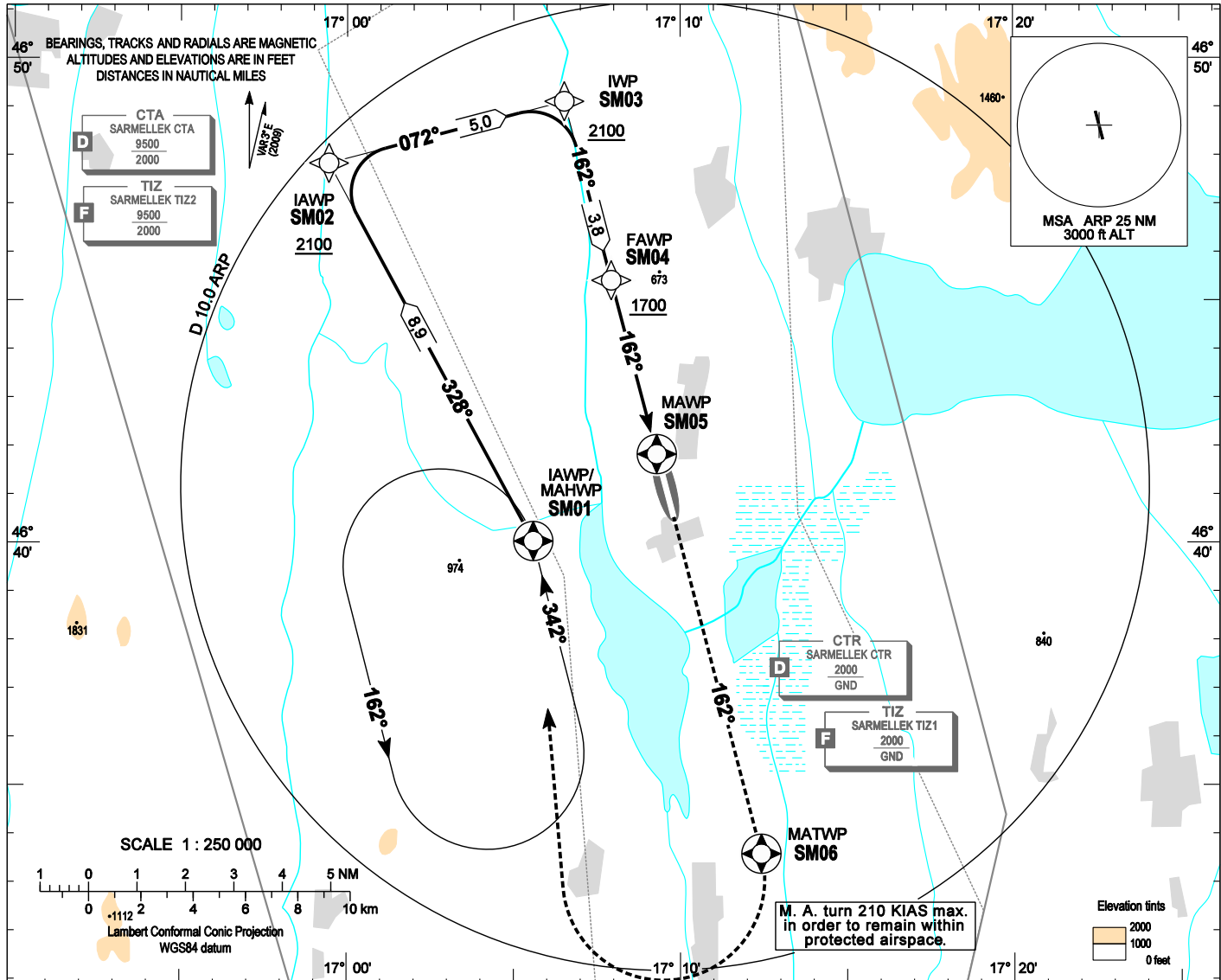
AIP HUNGARY

INSTRUMENT
APPROACH
CHART - ICAO

AERODROME ELEV 408
HEIGHTS RELATED TO
THR RWY 16 - ELEV 408

SÁRMELLEK TOWER 134.575
BALATON INFO 134.575
BUDAPEST INFO (WEST) 125.500

HÉVÍZ/BALATON
RNAV (GNSS) RWY 16
(ACFT CAT A, B, C, D)



(THR RWY 16)	10	9	8	7	6	5	4	3	2	1	0	1	2	3	4	5	6	7	8	9	10	11	NM from THR 16
OCA (OCH)					A	B	C	D															
STRAIGHT-IN APPROACH					770 (360)																		
CIRCLING APPROACH	ft AMSL	840	920	1410	1410																		
	VIS. m	1900	2800	3700	4600																		
										GROUND SPEED		kt	60	90	120	150	180						
										FAWP - MAWP 3.71 NM		MIN:sec	3:43	2:28	1:51	1:29	1:14						
Timing not authorized to define the MAWP.																							

AD 2 LHSM GPS/FMS RNAV ARRIVAL CHART RWY 16

Only aircraft, equipment and aircrew approved by the State of the Operator to carry out GNSS approaches, may use the procedure.

Arrivals:

Arrivals on 212°-092° may enter the initial approach directly at 4000, according to the advice of BALATON INFO.
Other arrivals must enter the holding.

Holding procedure:

Holding fix: SM01 (IAWP/MAHWP).

Left hand holding pattern.

Inbound track: 342°

Outbound track: 162°

Rate of turn: 3°/sec. or 25° bank angle
(whichever requires lesser bank)

Outbound distance: 4

Minimum holding altitude: 3000

Final approach descent: 3.16°

WAYPOINT COORDINATES AD 2 LHSM GPS/FMS RNAV ARRIVAL CHART RWY 16

WAYPOINT	LATITUDE	LONGITUDE	REMARK
SM01	N46 40 02.6	E017 05 35.5	IAWP
SM02	N46 47 50.3	E016 59 26.9	IAWP
SM03	N46 49 07.0	E017 06 31.1	IWP
SM04	N46 45 25.4	E017 07 55.7	FAWP
SM05	N46 41 50.2	E017 09 17.7	MAWP
SM06	N46 33 35.3	E017 12 25.5	MATWP
SM01	N46 40 02.6	E017 05 35.5	MAHWP