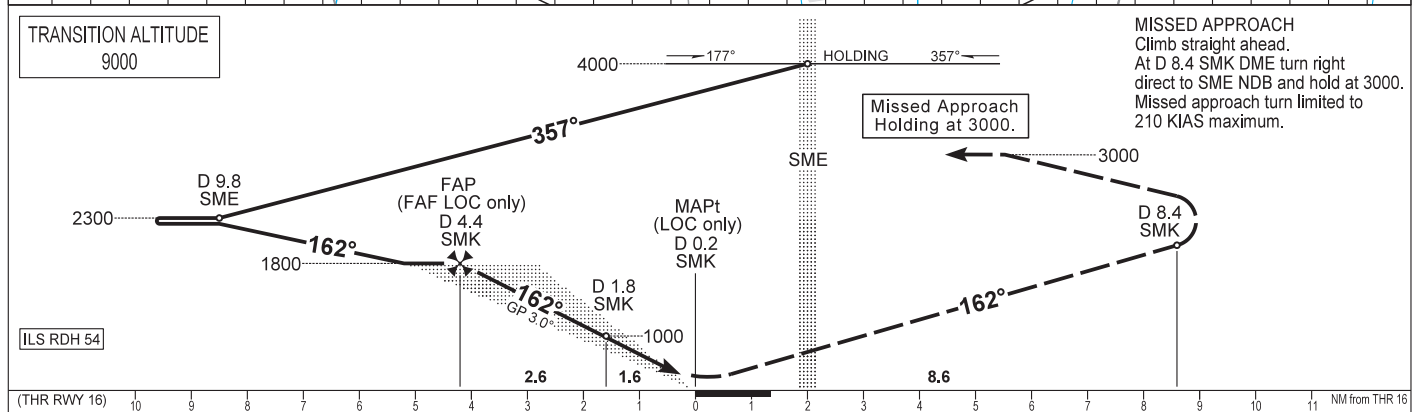
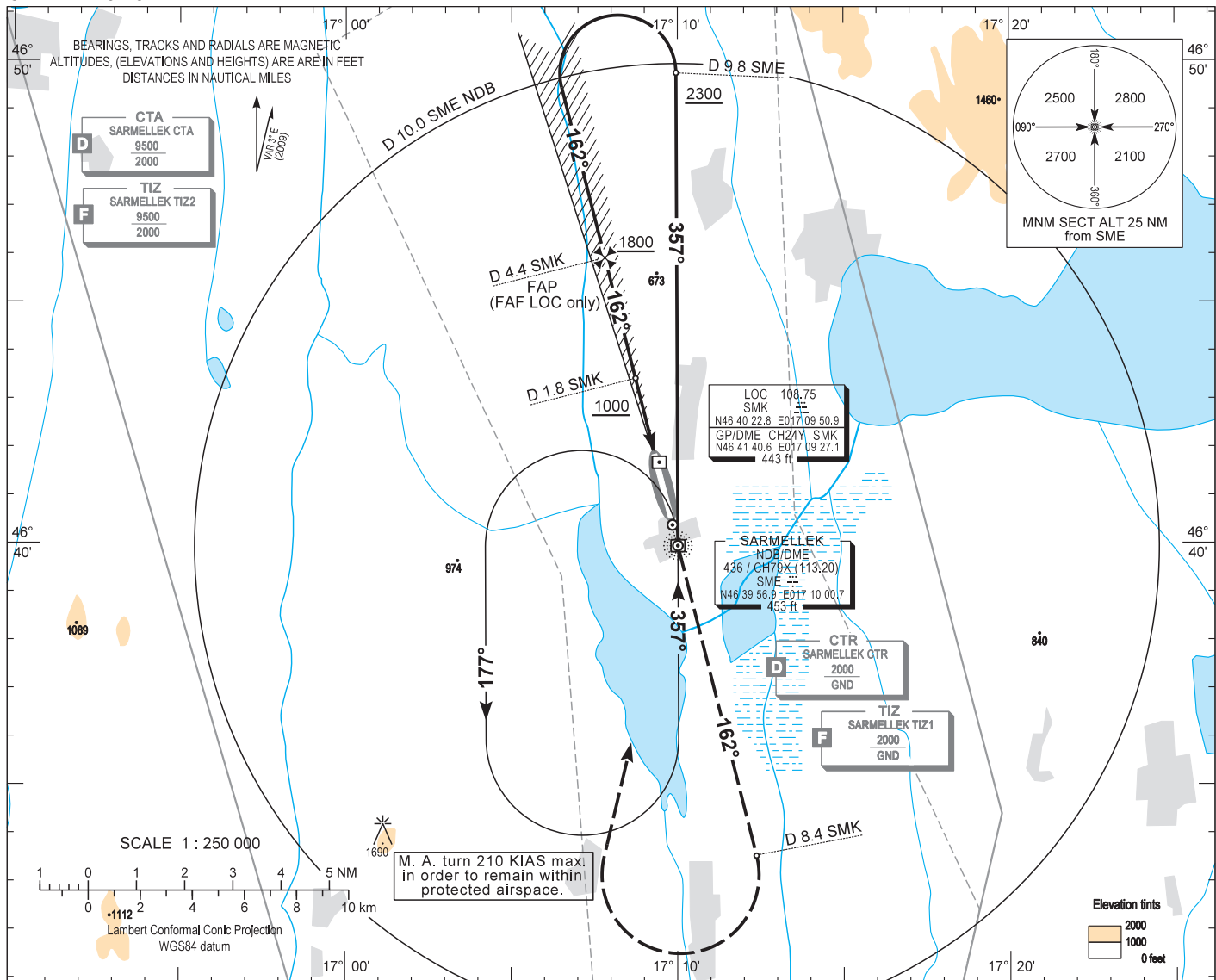


AIP HUNGARY

INSTRUMENT APPROACH CHART - ICAO
AERODROME ELEV 408
HEIGHTS RELATED TO THR RWY 16 - ELEV 408

SÁRMELLEK TOWER 134.575
BALATON INFO 134.575
BUDAPEST INFO (WEST) 125.500

HÉVÍZ/BALATON
ILS or LOC RWY 16
(ACFT CAT A, B, C, D)



(THR RWY 16)		10	9	8	7	6	5	4	3	2	1	0	1	2	3	4	5	6	7	8	9	10	11
OCA (OCH)		A				B				C				D				GROUND SPEED					
STRAIGHT-IN APPROACH	Cat. I	Press. ALT	540 (130)	550 (140)	560 (150)	570 (160)											kt	60	90	120	150	180	
	LOC only		770 (360)														FAP - MAPt 4.22 NM	MIN:sec	4:14	2:49	2:07	1:41	1:25
CIRCLING APPROACH		ft AMSL	825	1030	1410	1410																	
		VIS. m	1900	2800	3700	4600																	

AD 2 LHSM INSTRUMENT APPROACH CHART ILS OR LOC RWY 16

Approach from SME DME:

Initial altitude: 4000.

Fly outbound on 357° for 3 minutes or D 9.8 SME DME (whichever comes first) and descend to 2300.

Turn left (185 KIAS max.) intercept the localizer inbound on 162°, then descend to 1800.

Glide path interception at D 4.4 SMK DME, then follow ILS.

Holding procedure:

Holding fix: SME DME.

Left hand holding pattern.

Inbound track: 357°

Outbound track: 177°

Rate of turn: 3°/sec. or 25° bank angle

(whichever requires lesser bank)

Outbound timing: 1 min

Minimum holding altitude: 4000

3000 for Missed Approach