

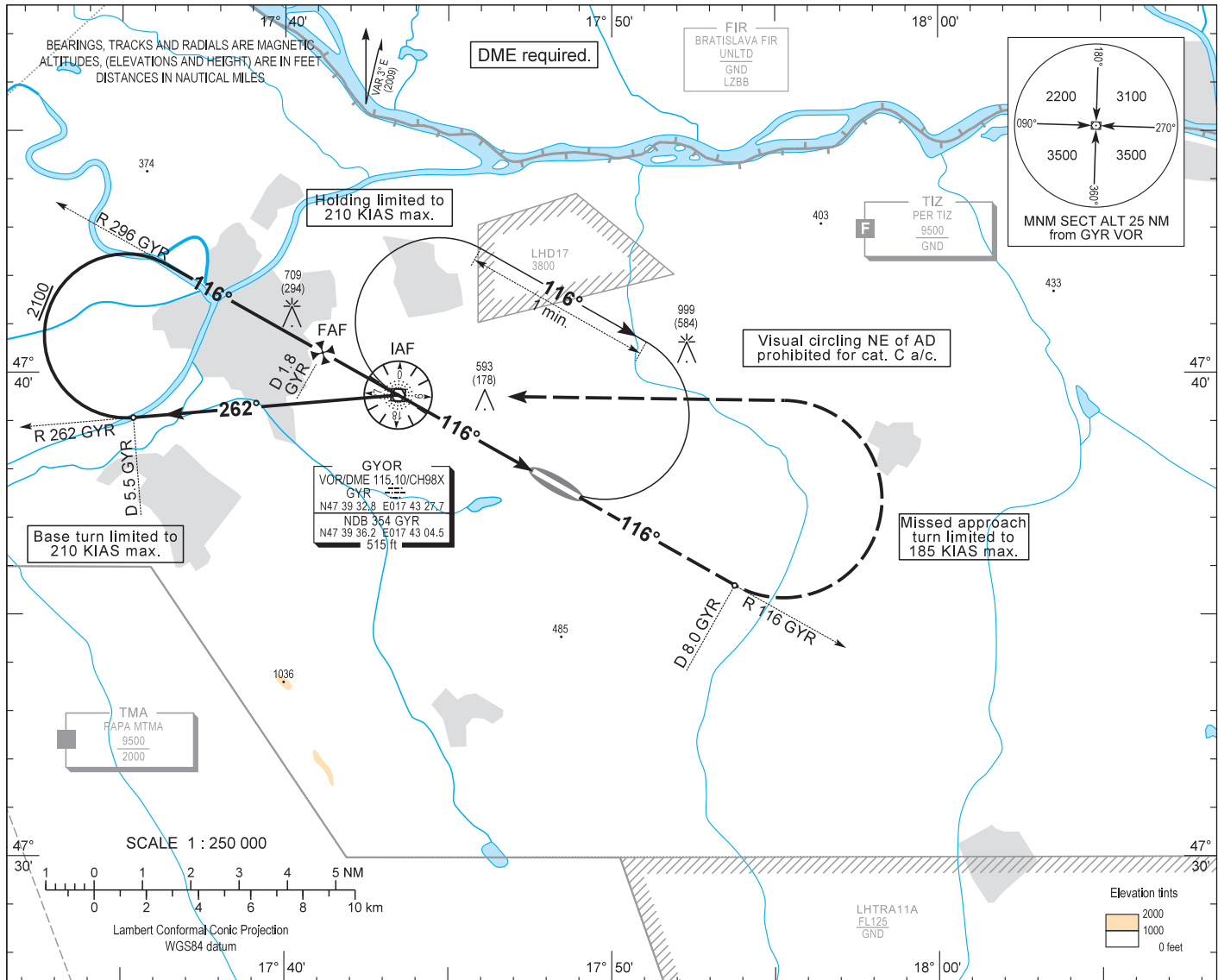
AIP HUNGARY

INSTRUMENT
APPROACH
CHART - ICAO

AERODROME ELEV 422
HEIGHTS RELATED TO
THR RWY 12 - ELEV 415

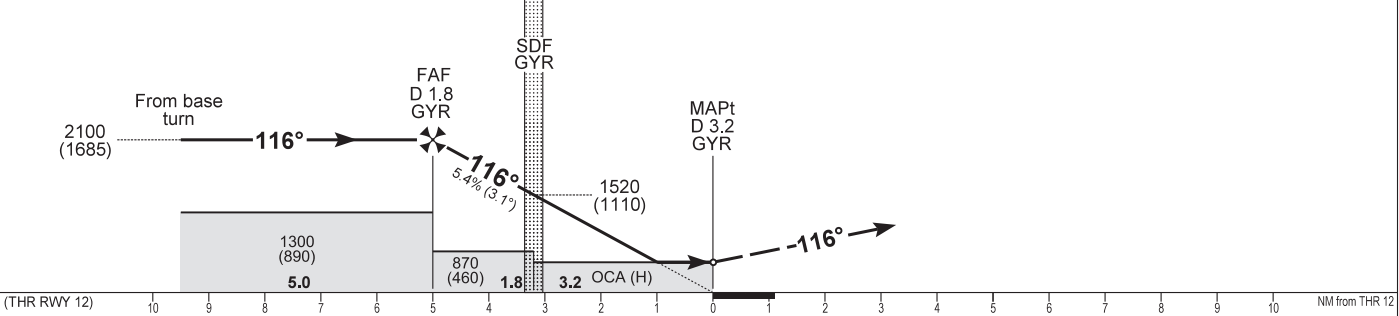
PÉR INFO 129.900
BUDAPEST INFO (WEST) 125.500

GYŐR/PÉR
VOR RWY 12
(ACFT CAT A, B, C)



TRANSITION ALTITUDE 9000

MISSED APPROACH
Continuous climb to 3000.
Straight ahead, then at D 8.0 GYR turn left (185 KIAS max.) direct to GYR and hold.



OCA (H)		A	B	C	D	CDFA with GYR DME				
STRAIGHT-IN APPROACH	VOR	840 (430)				NM	1.0 inbound	0.0	1.0 outbound	2.0
CIRCLING APPROACH	ft AMSL	890 (480)	930 (520)	1140 (730) SW of AD only	Not Authorized	ft	1840	1520	1190	860
	VIS. m	1900	2800	3700		(HGT)	(1430)	(1110)	(780)	(450)
Timing not authorized to define the MAPt.										
GROUND SPEED						kt	70	100	130	160
FAF - MAPt 5.0 NM						MIN:sec	4:17	3:00	2:18	1:53
VSP						ft/min	380	540	710	870

AD 2 LHPR INSTRUMENT APPROACH CHART VOR RWY 12

FIX	LATITUDE	LONGITUDE	FIX FORMATION (True BRGs)
IAF	N47 39 32.8	E017 43 27.7	GYR VOR
FAF	N47 40 25.3	E017 41 09.0	R 119.46 GYR VOR / D 1.79 GYR DME
SDF	N47 39 32.8	E017 43 27.7	GYR VOR
MAPt	N47 37 58.3	E017 47 35.0	R 119.46 GYR VOR / D 3.20 GYR DME
MA TP	N47 35 36.7	E017 53 45.6	R 119.46 GYR VOR / D 8.00 GYR DME

Final approach descent: 3.08°

Approach holding procedure:

Holding fix: GYR VOR.

Maximum speed: 210 KIAS
Inbound track: 296°
Outbound track: 116°
Turns: Right
Outbound timing: 1 min.
Minimum holding altitude: 4000 (3000 for Missed Approach)
MOCA: 2000
Entry: Omnidirectional