

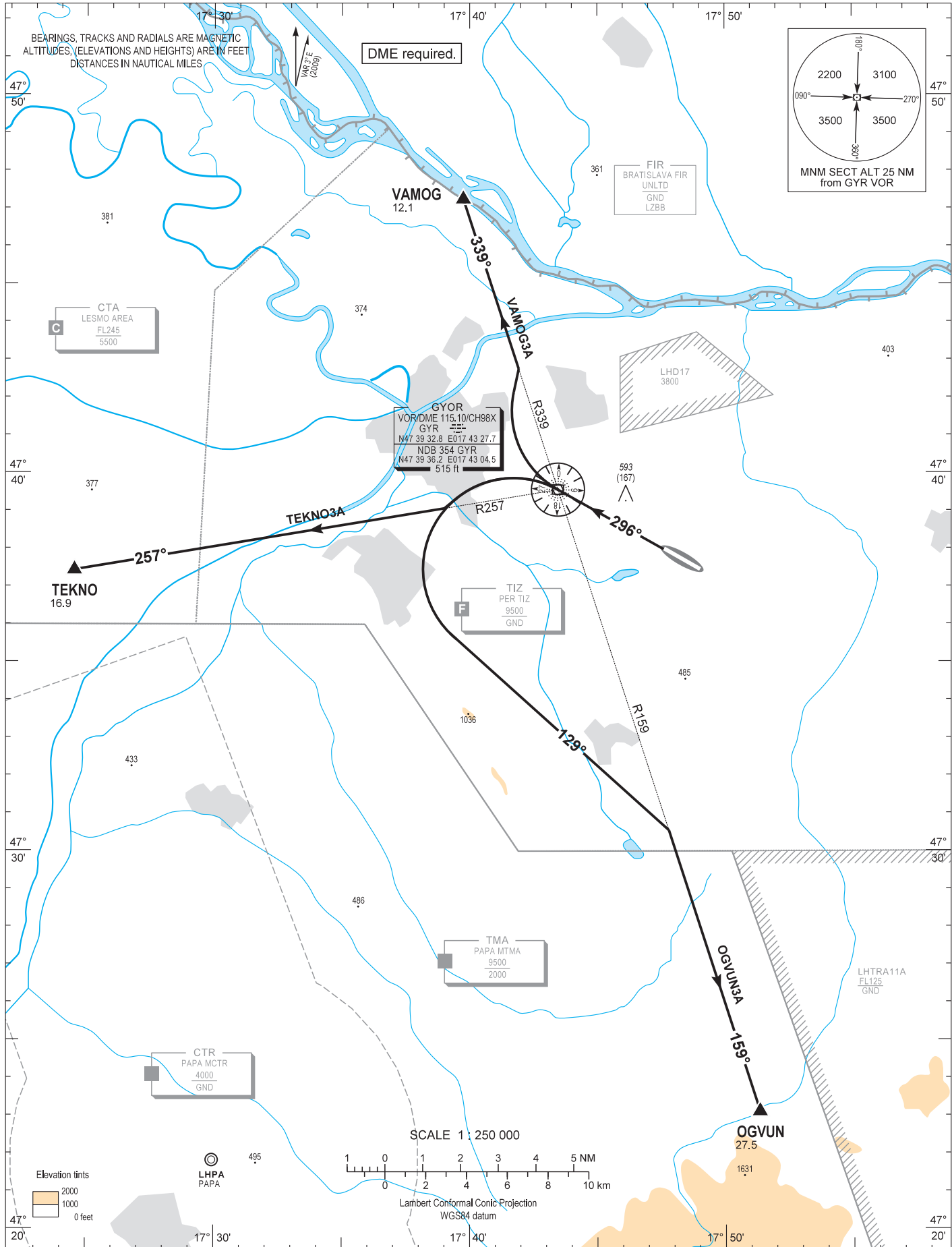
AIP HUNGARY

STANDARD DEPARTURE CHART -
INSTRUMENT (SID) -
ICAO

TRANSITION ALTITUDE
9000

PÉR INFO 129.900
BUDAPEST INFO (WEST) 125.500

GYÖR/PÉR
RWY 30
OGVUN3A TEKNO3A VAMOG3A



AD 2 LHPR STANDARD DEPARTURE CHART INSTRUMENT RWY 30

NAME (length)	PROCEDURE	CLIMBING
VAMOG3A (12.1)	After departure proceed to GYR. At GYR turn right to track 009° to intercept radial 339° outbound to VAMOG.	Climb initially 9000 AMSL. Further climb only by ATC.
TEKNO3A (16.9)	After departure proceed to GYR. At GYR turn left to track 227° to intercept radial 257° outbound to TEKNO.	
OGVUN3A (27.5)	After departure proceed to GYR. At GYR turn left to track 129° to intercept radial 159° outbound to OGVUN.	