

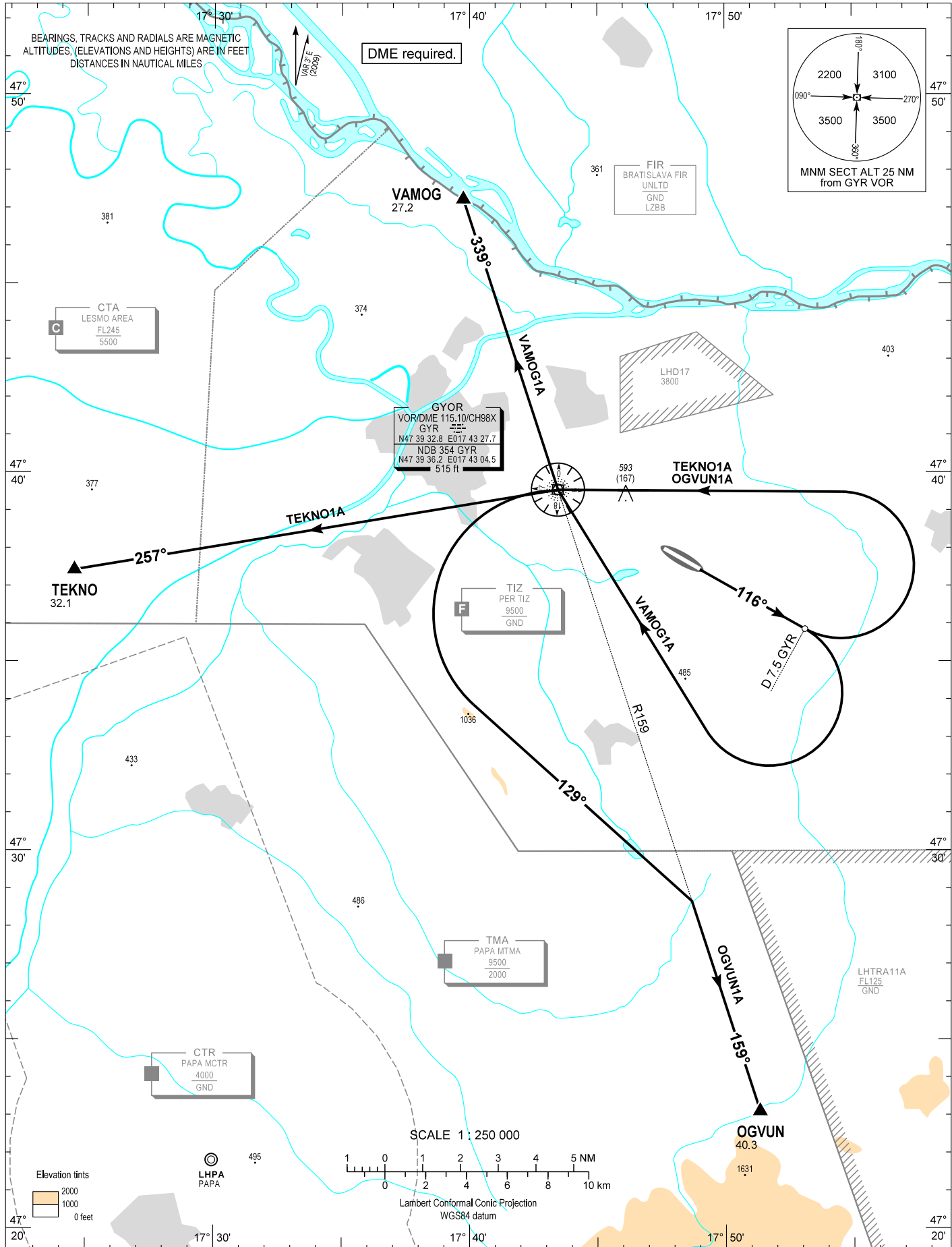
AIP HUNGARY

STANDARD DEPARTURE CHART -  
INSTRUMENT (SID) -  
ICAO

TRANSITION ALTITUDE  
9000

PÉR INFO 129.900  
BUDAPEST INFO (WEST) 125.500

GYÖR/PÉR  
RWY 12  
OGVUN1A TEKNO1A VAMOG1A



AD 2 LHPR STANDARD DEPARTURE CHART INSTRUMENT RWY 12

NAME (length)	PROCEDURE	CLIMBING
<b>VAMOG1A</b> (27.2)	RWY HDG to D 7.5 GYR DME then turn right direct to GYR. At GYR turn to intercept radial 339° outbound to VAMOG.	Climb initially 9000 AMSL. Further climb only by ATC.
<b>TEKNO1A</b> (32.1)	RWY HDG to D 7.5 GYR DME then turn left direct to GYR. At GYR turn to intercept radial 257° outbound to TEKNO.	
<b>OGVUN1A</b> (40.3)	RWY HDG to D 7.5 GYR DME then turn left direct to GYR. At GYR turn to intercept radial 159° outbound to OGVUN.	