

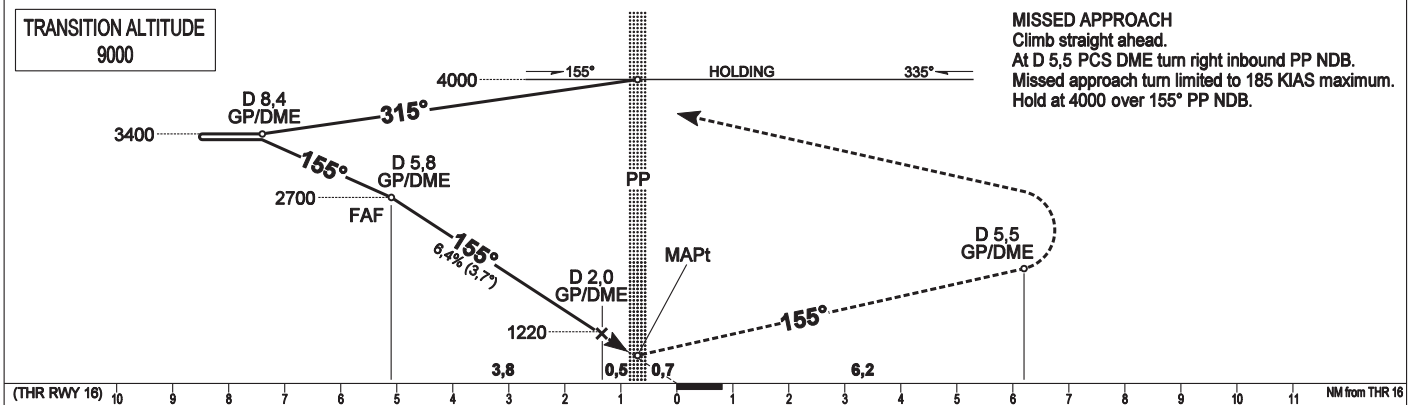
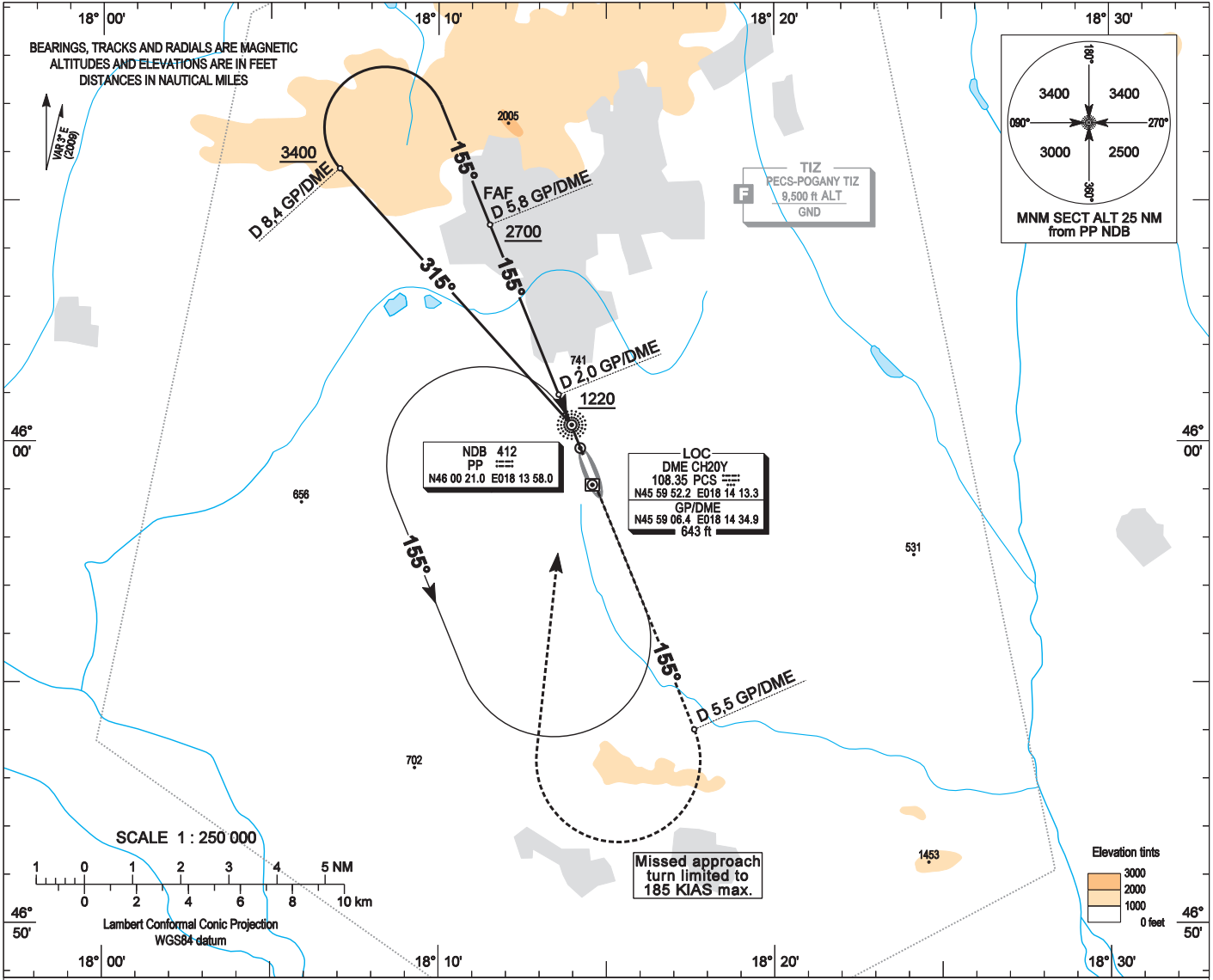
AIP HUNGARY

INSTRUMENT  
APPROACH  
CHART - ICAO

AERODROME ELEV 651  
HEIGHTS RELATED TO  
THR RWY 16 - ELEV 651

POGÁNY INFO 126,900  
BUDAPEST INFO (WEST) 125,500

PÉCS/POGÁNY  
NDB RWY 16  
(ACFT CAT A, B, C, D)



OCA (OCH)	A	B	C	D	GROUND SPEED	kt	60	90	120	150	180
	1040 (390)					FAF - MAPt 4,47 NM	MIN:sec	4:28	2:58	2:14	1:47
STRAIGHT-IN APPROACH	ft AMSL	1220	1220	1440							
	VIS. m	1900	2800	3700							
CIRCLING APPROACH	ft AMSL	1220	1220	1440							
	VIS. m	1900	2800	3700							

## AD 2-LHPP-NDB 16

Arrivals on 285° - 345° may enter the base turn procedure directly at 4000 above PP NDB according to the advice of POGÁNY INFO.  
Other arrivals shall enter the holding procedure.

### NDB approach from PP NDB:

Initial altitude: 4000. 185 KIAS max.

Depart PP NDB on heading 315° and descend to 3400 .

At 8,4 PCS DME turn right to 155° inbound PP NDB and descend to 2700.

Proceed to FAF at 5,8 PCS DME and descend to 1220.

At step-down fix D 2,0 PCS DME proceed to PP NDB and descend to 1040.

### Holding procedure:

Holding fix: PP NDB.

Left hand holding pattern.

Inbound track: 335°

Outbound track: 155°

Rate of turn: 3°/sec. or 25° bank angle  
(whichever requires lesser bank)

Outbound timing: 1 min.

Minimum holding altitude: 4000

Final approach descent: 3,66°