

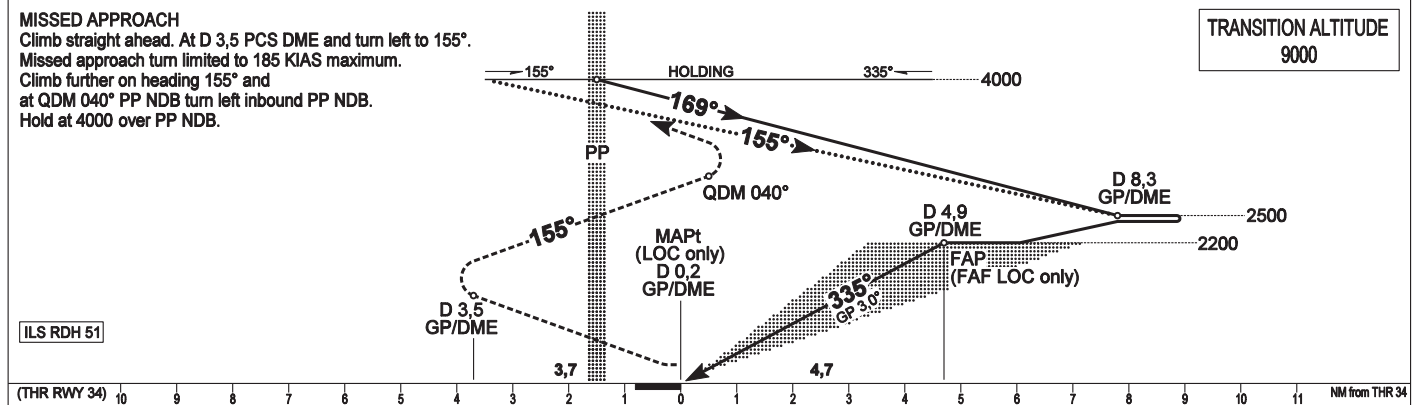
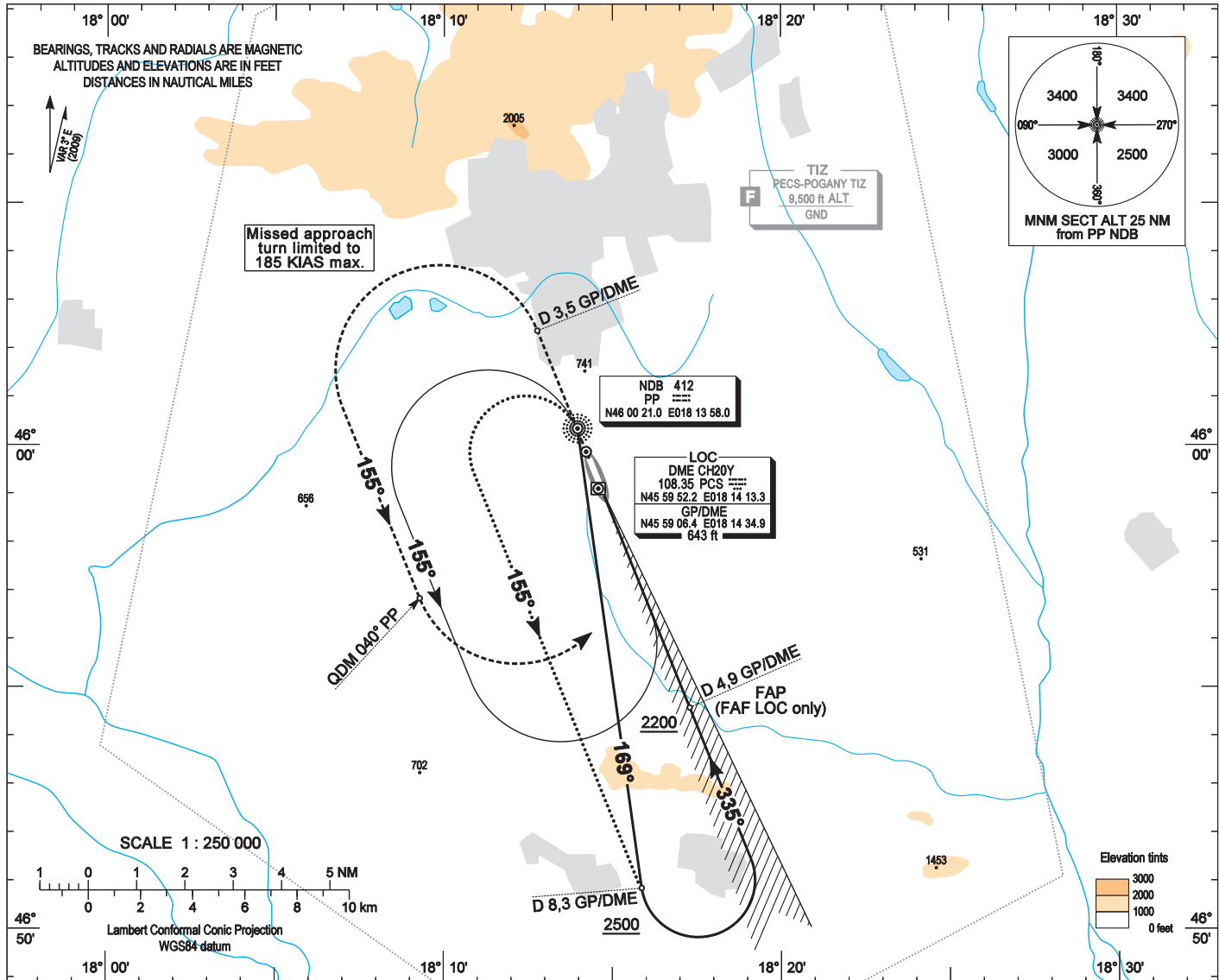
AIP HUNGARY

INSTRUMENT
APPROACH
CHART - ICAO

AERODROME ELEV 651
HEIGHTS RELATED TO
THR RWY 34 - ELEV 640

POGÁNY INFO 126,900
BUDAPEST INFO (WEST) 125,500

PÉCS/POGÁNY
ILS or LOC RWY 34
(ACFT CAT A, B, C, D)



| | | | | | | | | | | | | |
|----------------------|----------|-----------|-----------|-----------|-----------|--------------------|------------------------|------|------|------|------|------|
| OCA (OCH) | | A | B | C | D | GROUND SPEED | | | | | | |
| STRAIGHT-IN APPROACH | Cat. I | 776 (136) | 784 (144) | 794 (154) | 801 (161) | kt | 60 | 90 | 120 | 150 | 180 | |
| | LOC only | 900 (260) | | | | FAF - MAPt 4,69 NM | MIN:sec | 4:42 | 3:07 | 2:21 | 1:53 | 1:34 |
| | | ft AMSL | 1220 | 1220 | 1440 | 1730 | Rate of descent (5,2%) | | | | | |
| | | VIS. m | 1900 | 2800 | 3700 | 4600 | ft / MIN | 320 | 480 | 635 | 795 | 955 |

AD 2-LHPP - ILS 34

Arrivals on 139° - 199° may enter the base turn procedure directly at 4000 above PP NDB according to the advice of POGÁNY INFO.
Other arrivals shall enter the holding procedure.

ILS approach from PP NDB:

Initial altitude: 4000. 185 KIAS max.

Depart PP NDB on heading 169° and descend to 2500.

At 8,3 PCS DME turn left to intercept PCS LOC and descend to 2200, then follows ILS.

ILS approach from PP NDB holding:

Initial altitude: 4000. 185 KIAS max.

At PP NDB turn left to 155° and descend to 2500.

At D 8,3 PCS DME turn left to intercept PCS LOC and follow basic procedure.

Holding procedure:

Holding fix: PP NDB.

Left hand holding pattern.

Inbound track: 335°

Outbound track: 155°

Rate of turn: 3°/sec. or 25° bank angle

(whichever requires lesser bank)

Outbound timing: 1 min.

Minimum holding altitude: 4000