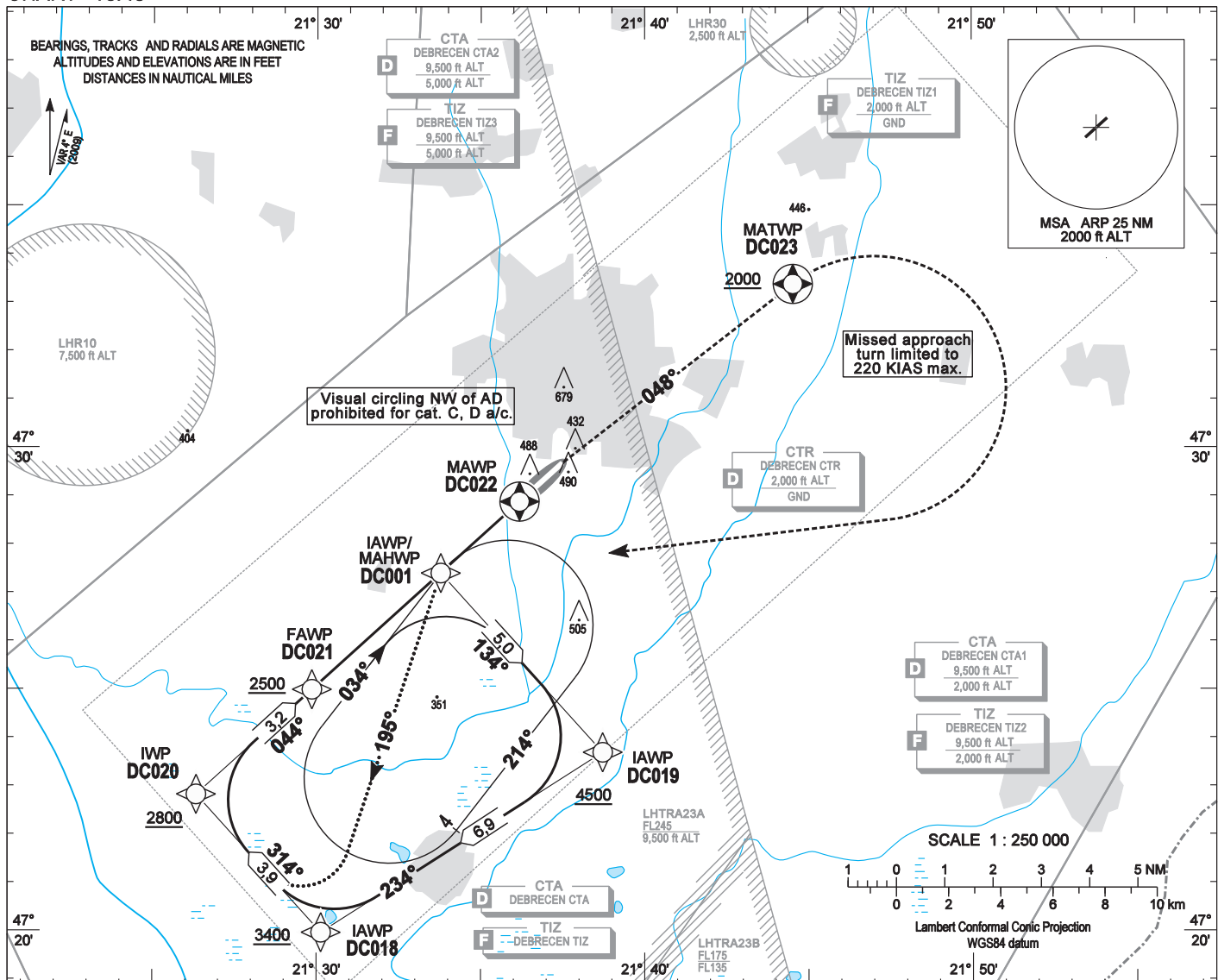


AIP HUNGARY

INSTRUMENT APPROACH CHART - ICAO
AERODROME ELEV 359
HEIGHTS RELATED TO THR RWY 05R - ELEV 355

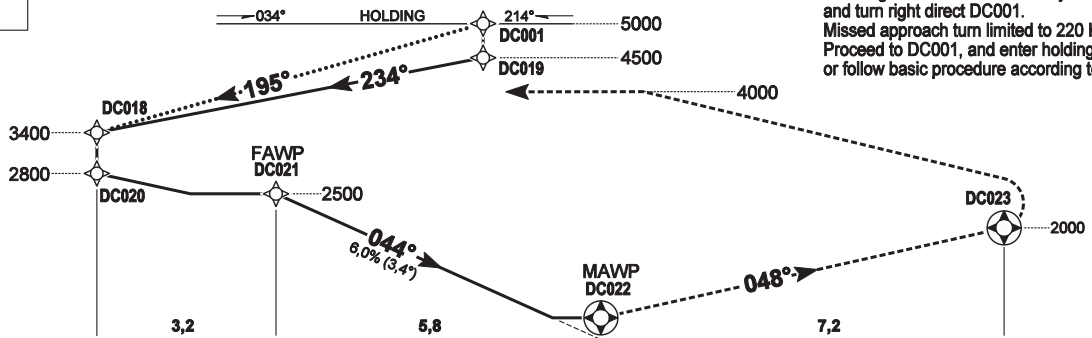
DEBRECEN TOWER 125,900
DEBRECEN INFO 125,900
BUDAPEST INFO (EAST) 133,000

DEBRECEN
RNAV^(GNSS) RWY 05R
(ACFT CAT A, B, C, D)



TRANSITION ALTITUDE
9000

MISSED APPROACH
Climbing to 4000. Reach 2000 by DC023 and turn right direct DC001. Missed approach turn limited to 220 KIAS maximum. Proceed to DC001, and enter holding at 4000, or follow basic procedure according to ATS.



(THR RWY 05R)	12	11	10	9	8	7	6	5	4	3	2	1	0	1	2	3	4	5	6	7	8	9	NM from THR 05R
OCA (OCH)	A				B				C				D				GROUND SPEED						
STRAIGHT-IN APPROACH	660 (310)				FAWP - MAWP 5,79 NM					kt	60	90	120	150	180								
CIRCLING APPROACH	ft AMSL	1060	1060	1160	1160						MIN:sec	5:48	3:51	2:54	2:19	1:56							
	VIS. m	1900	2800	3700	4600																		

AD 2-LHDC-RNAV_(GNSS) 05R

Only aircraft, equipment and aircrew approved by the State of the Operator to carry out GNSS approaches, may use the procedure.

Procedure entry:

1. From DC001 (DC NDB) holding via DC019 (continous track).
2. Direct entry at 5000 above DC001 (DC NDB) from PERIT 5A STAR (dotted track).
3. Direct entry at 4500 above DC018 from VERIG 5A or NARKA 5A STAR.

Holding procedure:

Holding fix: DC001.

Right hand holding pattern.

Sector 1 (parallel) entry prohibited (except Missed Approach returning direct to DC001).

Maximum speed: 220 KIAS
 Inbound track: 034°
 Outbound track: 214°
 Rate of turn: 3°/sec. or 25° bank angle
 (whichever requires lesser bank)
 Outbound distance: 4
 Minimum holding altitude: 5000
 4000 for Missed Approach

Final approach descent: 3,41°

**WAYPOINT COORDINATES
AD 2-LHDC-RNAV_(GNSS) 05R**

WAYPOINT	LATITUDE	LONGITUDE	REMARK
DC001	N47 27 24.2	E021 33 46.9	IAWP
DC019	N47 23 41.9	E021 38 43.2	IAWP
DC018	N47 19 58.2	E021 30 08.1	IAWP
DC020	N47 22 49.5	E021 26 19.8	IWP
DC021	N47 24 59.7	E021 29 51.3	FAWP
DC022	N47 28 53.0	E021 36 10.9	MAWP
DC023	N47 33 23.1	E021 44 31.7	MATWP
DC001	N47 27 24.2	E021 33 46.9	MAHWP