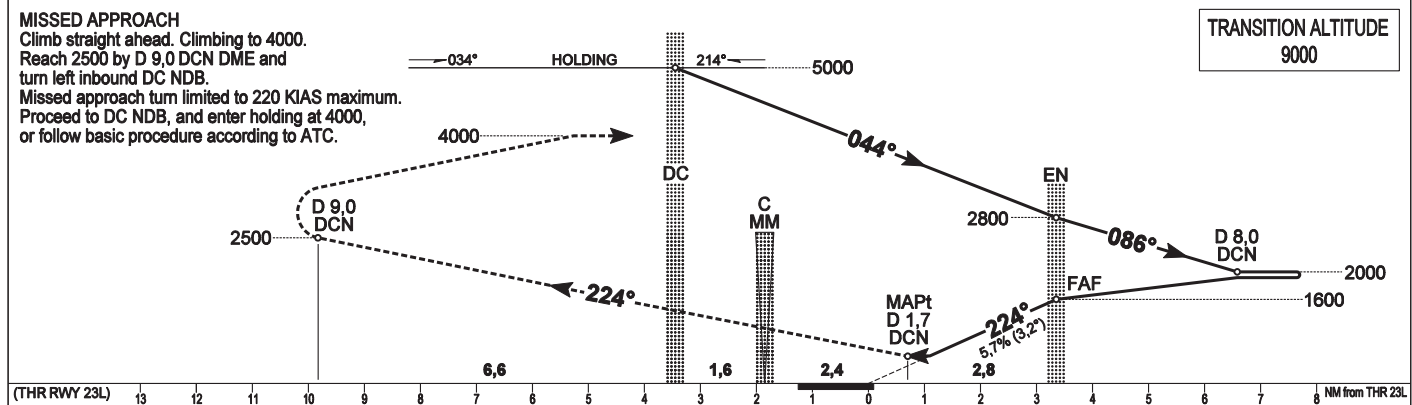
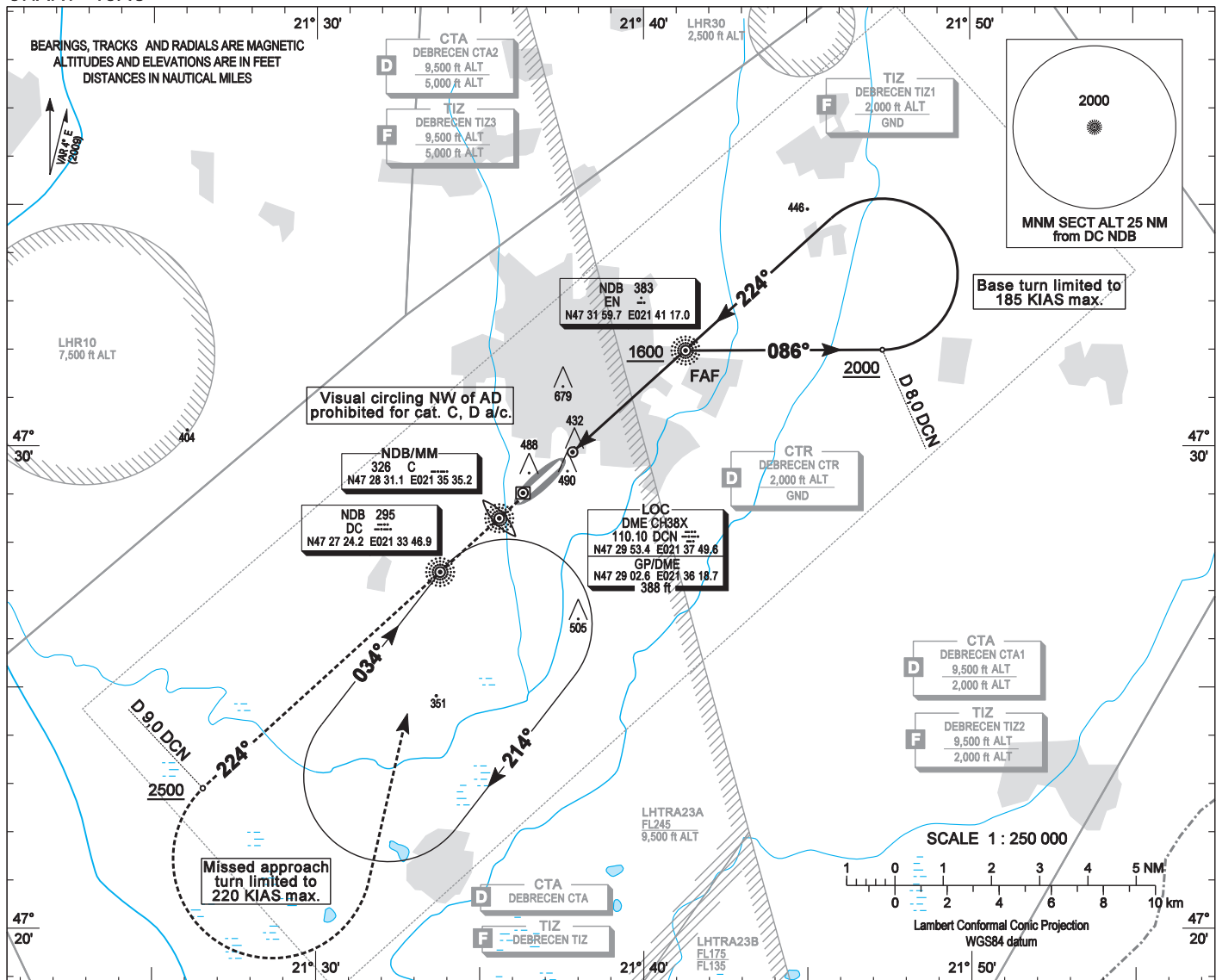


AIP HUNGARY

INSTRUMENT APPROACH CHART - ICAO
AERODROME ELEV 359
HEIGHTS RELATED TO THR RWY 23L - ELEV 359

DEBRECEN TOWER 125,900
DEBRECEN INFO 125,900
BUDAPEST INFO (EAST) 133,000

DEBRECEN NDB RWY 23L
(ACFT CAT A, B, C, D)



(THR RWY 23L)	13	12	11	10	9	8	7	6	5	4	3	2	1	0	1	2	3	4	5	6	7	8	NM from THR 23L		
OCA (OCH)					A	B	C	D																	
STRAIGHT-IN APPROACH					920 (560)																				
CIRCLING APPROACH	ft AMSL	1060	1060	1160	1160																				
	VIS. m	1900	2800	3700	4600																				
													GROUND SPEED		kt	60	90	120	150	180					
													FAF - MAPt 2,78 NM		MIN:sec	2:47	1:51	1:24	1:07	0:56					

AD 2-LHDC-NDB 23L

NDB approach from DC NDB:

Initial altitude: 5000.

Proceed to EN NDB and descend to 2800.

At EN NDB turn right to 086° and descend to 2000.

Fly outbound to D 8,0 DCN DME and turn left to track 224° inbound EN NDB (185 KIAS max.).

Proceed to EN NDB and descend to 1600.

At EN NDB descend to 920 on track 224°.

Holding procedure:

Holding fix: DC NDB.

Right hand holding pattern.

Sector 1 (parallel) entry prohibited.

Maximum speed: 220 KIAS

Inbound track: 034°

Outbound track: 214°

Rate of turn: 3°/sec. or 25° bank angle
(whichever requires lesser bank)

Outbound timing: 1 min.

Minimum holding altitude: 5000

4000 for Missed Approach

Final approach descent: 3,23°