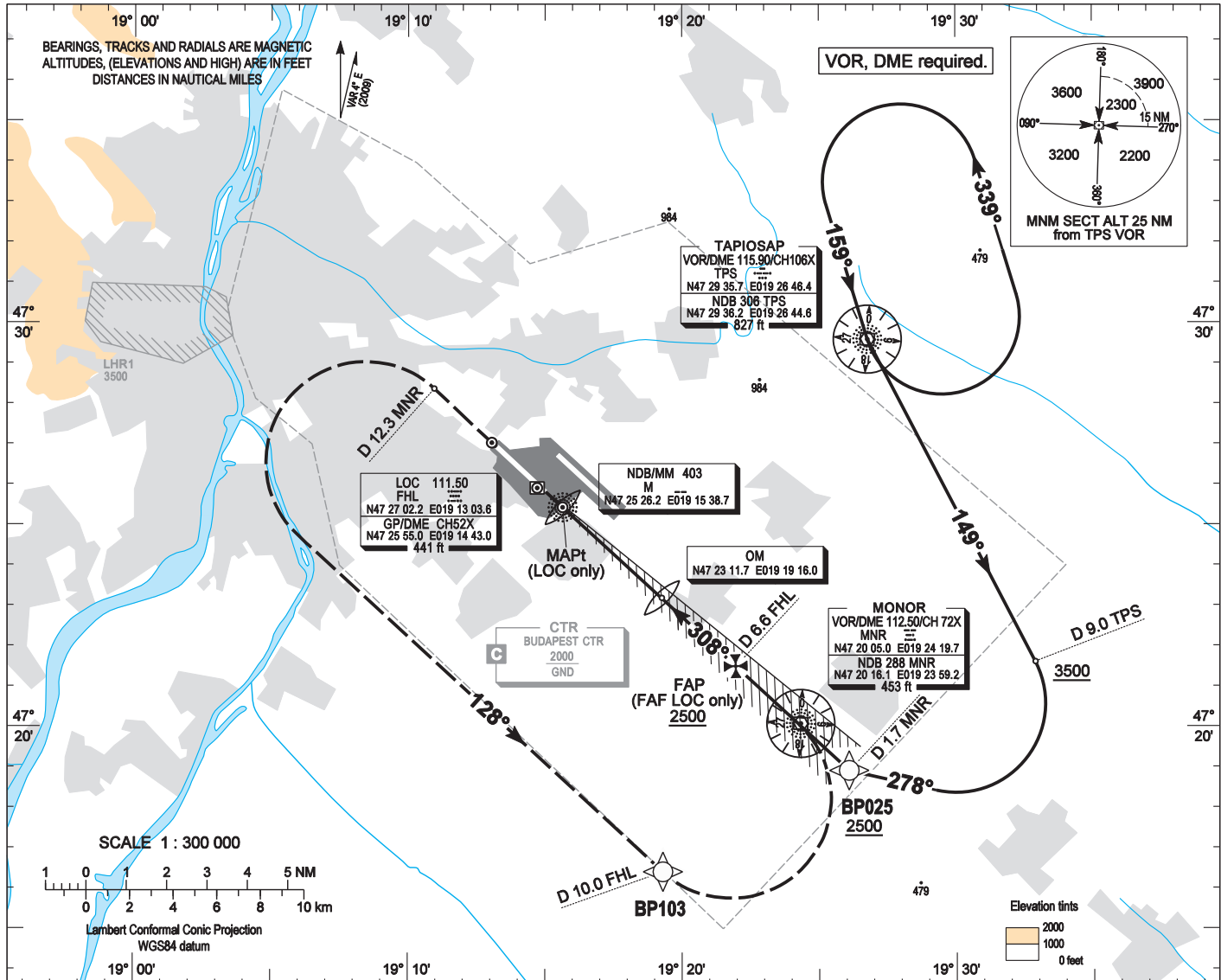


AIP HUNGARY

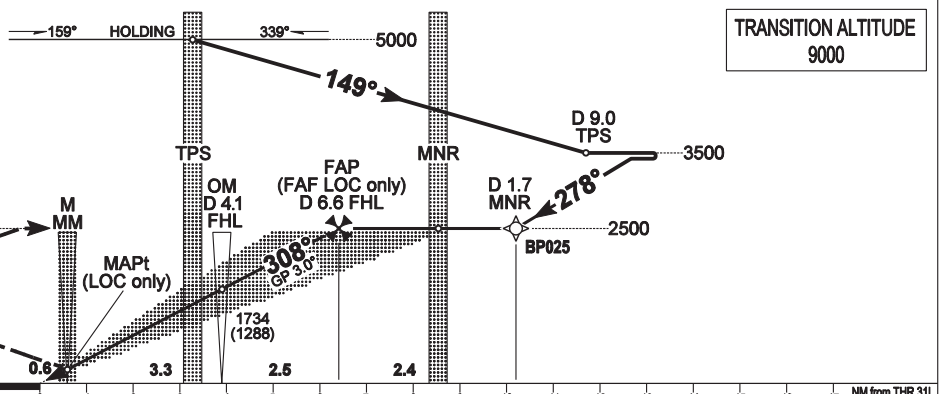
INSTRUMENT APPROACH CHART - ICAO  
AERODROME ELEV 496  
HEIGHTS RELATED TO THR RWY 31L - ELEV 448

BUDAPEST APPROACH 129.700  
122.975  
119.500  
ATIS 132.375 (117.300)  
BUDAPEST TOWER 118.100  
BUDAPEST GROUND 121.900

BUDAPEST/LISZT FERENC  
ILS or LOC RWY 31L  
(ACFT CAT A, B, C, D)



**MISSED APPROACH**  
Continuous climb to 2500.  
Straight ahead then at D 12.3 MNR DME turn left to track 128°.  
When crossing D 10.0 FHL DME turn left to intercept LOC FHL then follow ILS.



OCA (OCH)		A	B	C	D	GROUND SPEED							
STRAIGHT-IN APPROACH	Cat. I.	Press. ALT	584 (135)	594 (145)	604 (155)	614 (165)	kt						
	Cat. II.	Rdo. ALT	(46)	(63)	(76)	(89)	MIN:sec						
	LOC only		755 (310)				Rate of descent (5.2%)						
CIRCLING APPROACH	ft AMSL	950	1100	1280	1460	DIST FM DME	NM	1.0	2.0	3.0	4.0	5.0	6.0
	VIS. m	1900	2800	3700	4600	ALT (HGT)	ft	770 (320)	1080 (640)	1400 (960)	1720 (1270)	2040 (1590)	2360 (1910)

## AD 2 LHBP INSTRUMENT APPROACH CHART ILS OR LOC RWY 31L

### ILS approach from TPS:

Initial level: 5000.

Depart TPS VOR on R 149 and descend to 3500.

At D 9.0 TPS DME fix turn right heading 278° and descend to 2500 to intercept and follow ILS.

### Holding procedure:

Holding fix: TPS VOR.

Left hand holding pattern.

Maximum speed: 230 KIAS

Inbound track: 159°

Outbound track: 339°

Rate of turn: 3°/sec. or 25° bank angle  
(whichever requires lesser bank)

Outbound timing: 1 min.

Minimum holding altitude: 5000 (ATC)  
3000 for Missed approach (ATC)

Final approach descent (LOC only): 2.95°