

AIP HUNGARY

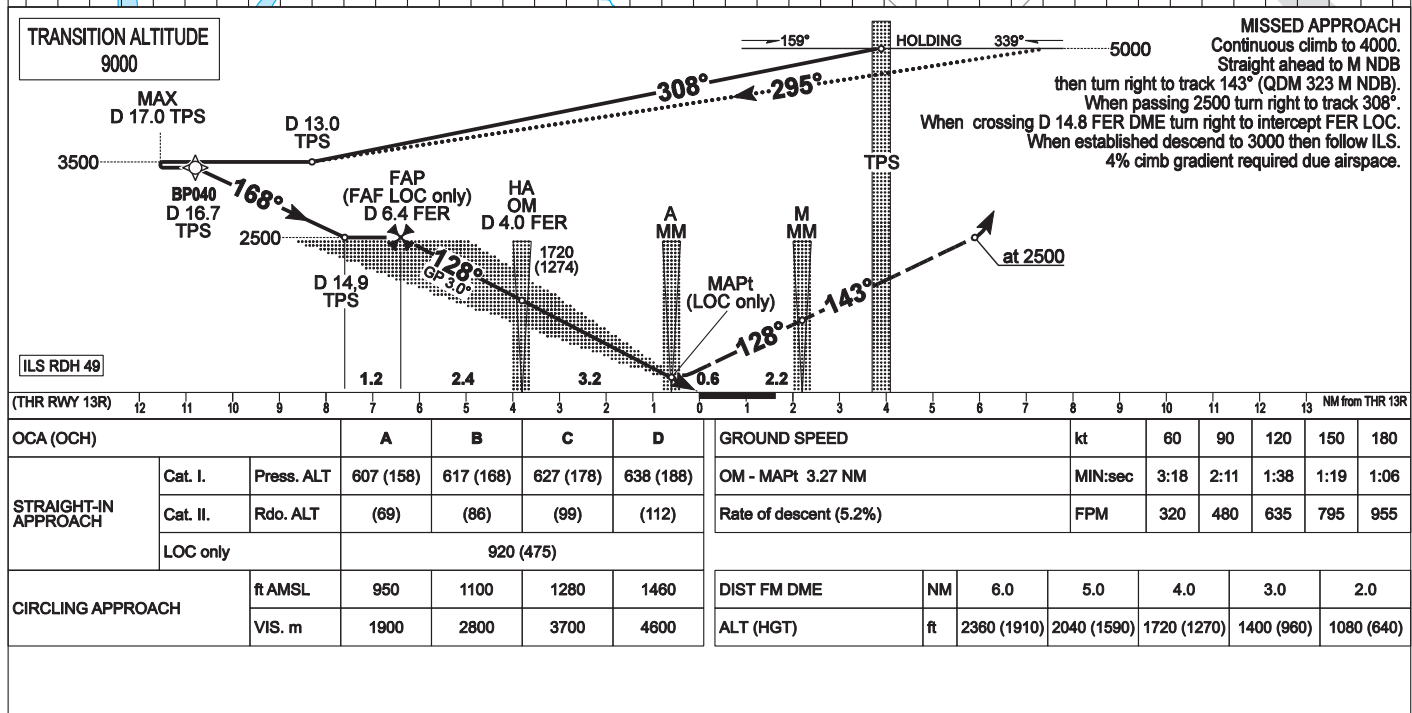
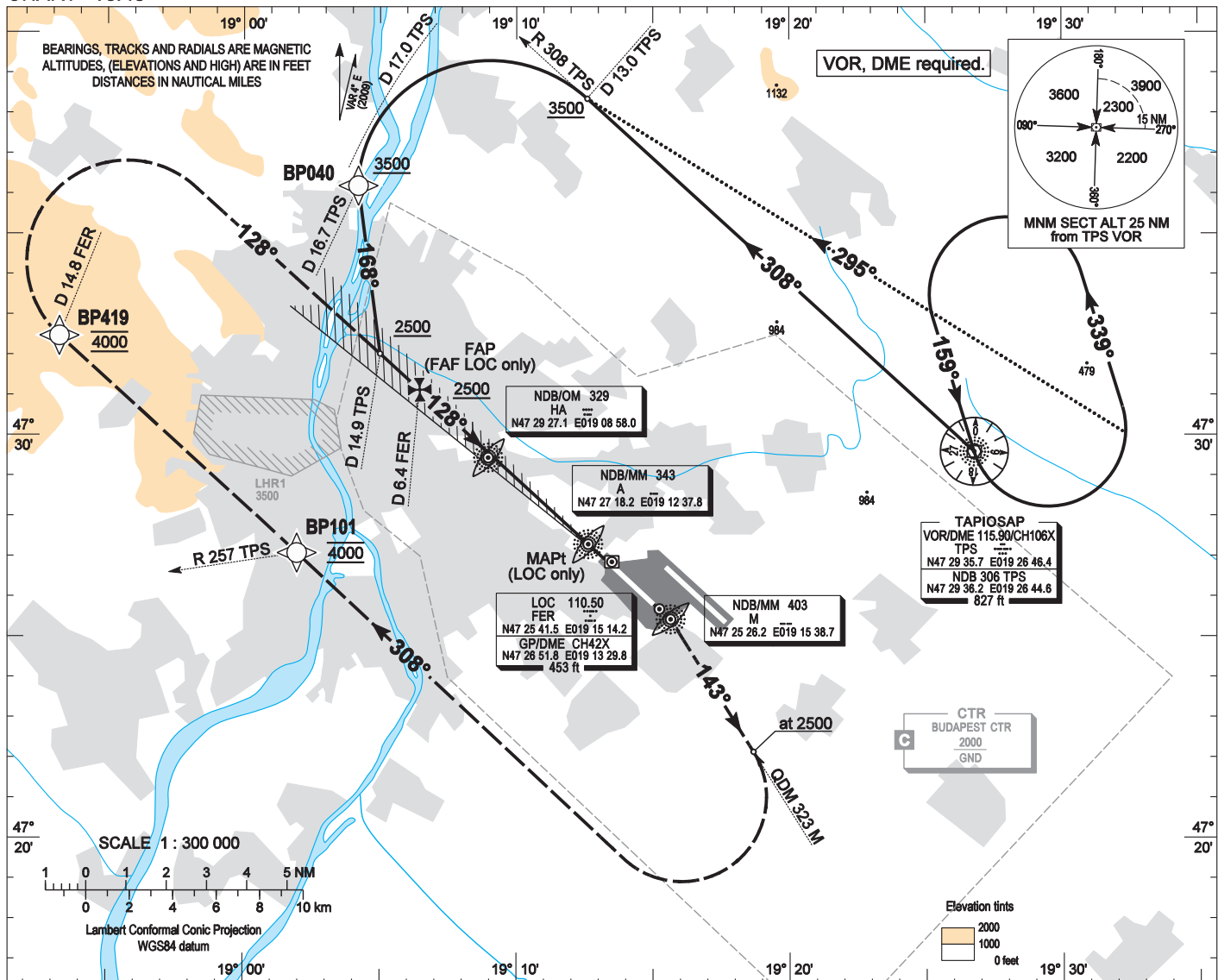
INSTRUMENT APPROACH CHART - ICAO

AERODROME ELEV 496
HEIGHTS RELATED TO THR RWY 13R - ELEV 448

BUDAPEST APPROACH 129.700
122.975
119.500

ATIS 132.375 (117.300)
BUDAPEST TOWER 118.100
BUDAPEST GROUND 121.900

BUDAPEST/LISZT FERENC
ILS or LOC RWY 13R
(ACFT CAT A, B, C, D)



AD 2 LHBP INSTRUMENT APPROACH CHART ILS OR LOC RWY 13R

ILS approach from TPS:

Initial level: 5000. Depart TPS VOR on R 308 TPS VOR.
Descent from 5000 to 3500 to the turning point.
At D 13.0 TPS DME turn left, complete the turn on heading 168°.
The farthest point of the turn arc may not be farther than D 17.0 TPS DME.
Further descent only on heading 168° to 2500 to the interception of LOC then follow ILS.

Holding procedure:

Holding fix: TPS VOR.
Left hand holding pattern.
Maximum speed: 230 KIAS
Inbound track: 159°
Outbound track: 339°
Rate of turn: 3°/sec. or 25° bank angle
(whichever requires lesser bank)
Outbound timing: 1 min.
Minimum holding altitude: 5000 (ATC)
3000 for Missed approach (ATC)

Final approach descent (LOC only): 2.94°